



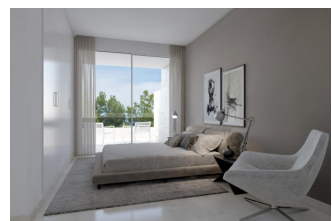
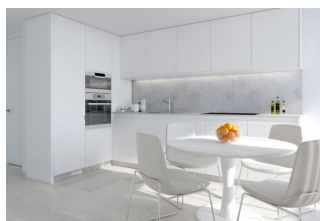
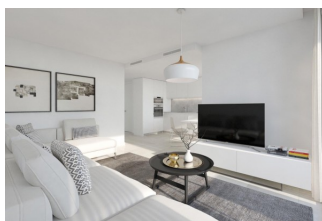
REF: # 8772

FINESTRAT



INFO

PRIJS:	400.000 €
TYPE HUIS:	Villa's
PLAATS:	Finestrat
SLAAPKAMERS:	3
Badkamers:	3
Build (m2):	105
Plot (m2):	310
Terras (m2):	-
Years:	-
Floor:	-
bericht	-



BESCHRIJVING

6 semi-detached modern style houses with panoramic sea views. They are located in the privileged environment of Sierra Cortina, near Benidorm, combining a natural environment by the sea. The design is designed to enjoy life outside and inside with maximum privacy. They are distributed on 2 levels. The main floor has a large bedroom, a bathroom, a kitchen with a living-dining room of more than 40 m2, with large windows to make the most of the hours of natural light and enjoy the sun. The upper floor has 2 large bedrooms, each with its en-suite bathroom

and balconies with terraces with magnificent views. Parking on the plot for 2 cars. The houses are equipped with Smart Home System (interior and exterior lighting, electric shutters, air conditioning (through ducts), Osmosis system, BOSCH appliances and etc.



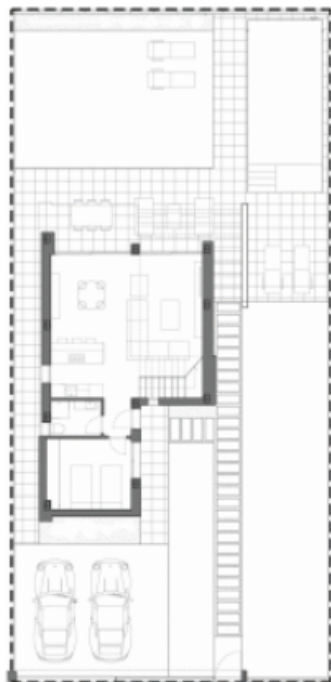












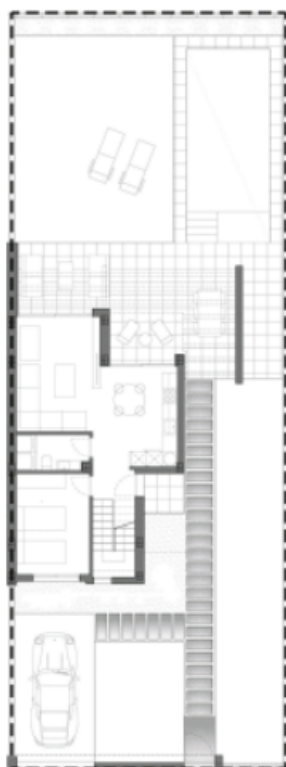
PLANTA BAJA

SUPERFICIE CONSTRUIDA	74,65 m ²
SALÓN - COMEDOR - COCINA	41,25 m ²
ENTRADA	2,00 m ²
DORMITORIO 3	11,40 m ²
ASEO CON DUCHA	3,40 m ²
SUPERFICIE ÚTIL	58,05 m²
PORCHE ENTRADA	2,00 m ²
TERRAZA SEMICUBIERTA	32,00 m ²



PLANTA ALTA

SUPERFICIE CONSTRUIDA	55,85 m ²
PASO	2,45 m ²
DORMITORIO 1	15,05 m ²
BAÑO 1	6,00 m ²
DORMITORIO 2	13,80 m ²
BAÑO 2	4,65 m ²
SUPERFICIE ÚTIL	41,95 m²
TERRAZA 1	4,20 m ²
TERRAZA 2	5,95 m ²



PLANTA BAJA

SUPERFICIE CONSTRUIDA	60,90 m ²
SALÓN - COMEDOR - COCINA	26,65 m ²
ENTRADA - ESCALERA	6,85 m ²
DORMITORIO 3	11,20 m ²
ASEO CON DUCHA	3,85 m ²
SUPERFICIE ÚTIL PLANTA BAJA	48,55 m²
PORCHE	2,35 m ²
TERRAZA SEMICUBIERTA	38,20 m ²



PLANTA ALTA

SUPERFICIE CONSTRUIDA	43,90 m ²
PASO	1,65 m ²
DORMITORIO 1	13,80 m ²
BAÑO 1	4,85 m ²
DORMITORIO 2	11,00 m ²
BAÑO 2	4,70 m ²
SUPERFICIE ÚTIL PLANTA ALTA	36,00 m²
TERRAZA	13,70 m ²

"OUR EXPERIENCE IS YOUR GUARANTEE"