



REF: # 6743

SAN MIGUEL (BIGASTRO)



#### INFO

PRIJS:	110.000 €
TYPE HUIS:	Appartement
PLAATS:	San Miguel (Bigastro)
SLAAPKAMERS:	3
Badkamers:	2
Build ( m2 ):	111
Plot ( m2 ):	-
Terras ( m2 ):	41
Years:	
Floor:	-
bericht	113.000 €



#### BESCHRIJVING

Delivery Summer 2020. This is a superb development set in the Spanish countryside of BIGASTRO right in the heart of the Vega Baja. This is the second phase and comprises of large 3 and 4 bedroom APARTMENTS with a really competitive prices, from just 110,000€. The price includes an underground parking space, private solarium and furniture pack! They are of an open plan concept with lounge dining area and modern equipped kitchen, 3 bedrooms and 2 bathrooms. There is a 9m2 balcony and private 32m2 solarium with countryside views. Elevator to access all floors. There are apartments available of various orientation. You are 8km from main amenities, 30km from the beach, just 15km from Golf opportunities and 55km to the airport. Bigastro is located in the heart of Vega Baja del Segura district and near to Orihuela. The area offers many hiking and cycling opportunities around the river. The town presents an important industrial estate that offers all kind of services; a recreation area known as "La Pedrera", with barbecues, mountain-bike tracks and controlled camping area; and other services.

#### ENERGETIC CERTIFIED



<b>STIJL</b> <ul style="list-style-type: none"><li>• Modern</li><li>• Contemporary</li></ul>	<b>UITZICHT</b> <ul style="list-style-type: none"><li>• Bergzicht</li></ul>	<b>AFSTAND NAAR :</b> <div>Strand : +10 Km</div> <div>Vliegveld: 60 Km</div> <div>Centrum : 8 Km</div> <ul style="list-style-type: none"><li>• Tegels</li><li>• Steen</li></ul>	<b>ORIËNTATIE</b> <div>South East West</div>
<b>MEUBELS</b> <ul style="list-style-type: none"><li>• Gemeubileerd</li></ul>	<b>PARKING NEE CARS</b> <div>Garage geen Cars : 1</div> <div>: 1</div>		<b>KEUKEN</b> <ul style="list-style-type: none"><li>• Open keuken</li><li>• Ingerichte keuken</li></ul>
<b>EXTRA</b> <ul style="list-style-type: none"><li>• Veiligheidsdeur</li><li>• Dubbele beglazing</li><li>• Lift</li></ul>			





















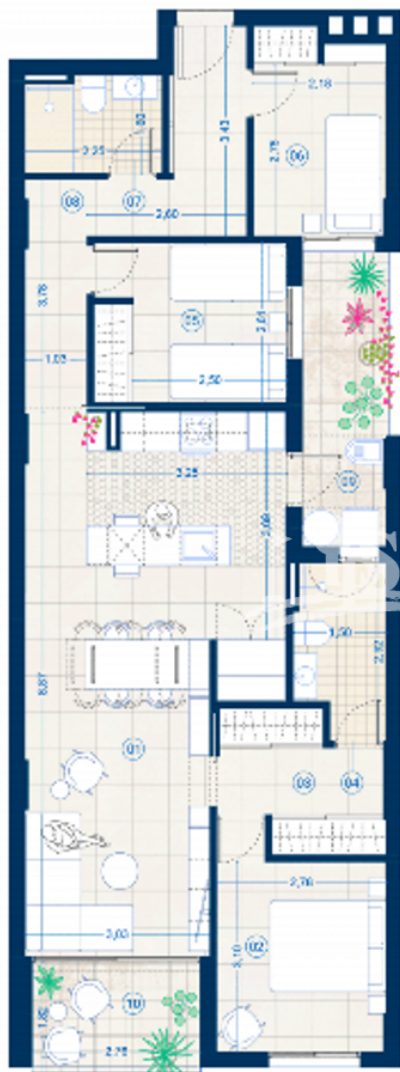












PLANTA VIVIENDA/HOUSE FLOOR

Ubicaciones Planta Baja/Location in Ground floor



Ubicadas en Planta Garaje/Location in Parking floor



Plano de solarium/Solarium study

#### Tipología / Typology

Viviendas con solarium y plaza de garaje/  
Houses with solarium and parking place

Dormitorios/Bedrooms: 3

Baños/Bathrooms: 2

#### Localización/Location

C/ Río Segura, Bigastro

**Bajo09**

#### VIVIENDA/HOUSE

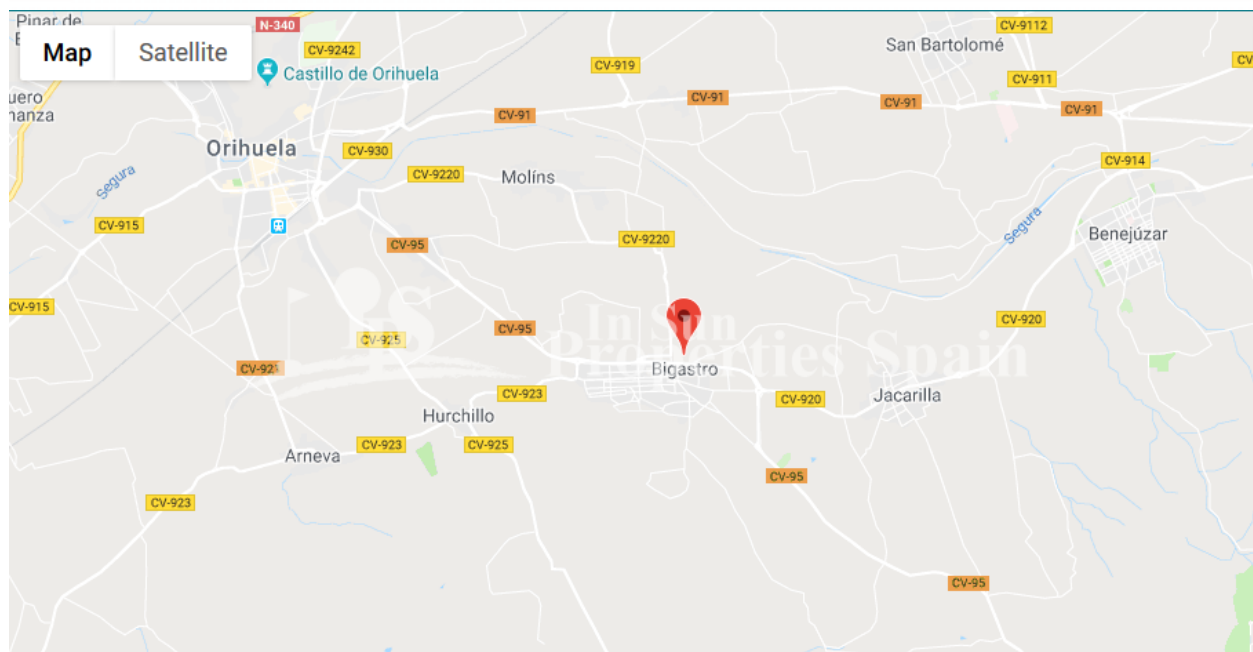
NºSOLARIUM/SOLARIUM N.	41
NºGARAJE/PARKING N.	52

Superficie terraza/Terrace surface	4,55m²
Superficie patio/Courtyard surface	6,72m²
Superficie solarium/Solarium surface	31,65m²
Superficie garaje/Parking surface	11,60m²

Superficie construida/Built area	104,25m²
Superficie total/Total surface	133,08m²

#### Superficies útiles/Useful surfaces

01: Salón Comedor Cocina/Living & Kitchen	32,41m²	06: Dormitorios/Bedrooms	7,00m²
02: Dormitorio/Bedroom 1	9,06m²	07: Baño/Bathroom 2	3,48m²
03: Vestidor/Changing room	5,81m²	08: Vestidor/Bathrobe/dressing room	0,00m²
04: Baño/Bathroom 1	3,58m²	09: Lavadero/Plaza/Laundry room/Courtyard	6,72m²
05: Dormitorio/Bedroom 2	8,14m²	10: Terraza/Terrace	4,55m²
Superficie útil total de Vivienda/Total useful surface house			
71,56m²			



**"OUR EXPERIENCE IS YOUR GUARANTEE"**