



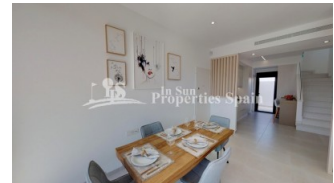
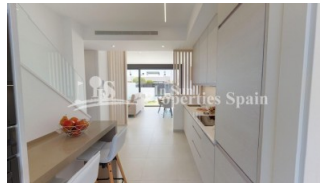
REF: # 6380

COSTA MURCIA (SAN PEDRO DEL PINATAR)



INFO

PRIJS:	329.950 €
TYPE HUIS:	Villa's
PLAATS:	Costa Murcia (San Pedro del Pinatar)
SLAAPKAMERS:	3
Badkamers:	3
Build (m2):	128
Plot (m2):	190
Terras (m2):	52
Years:	
Floor:	-
bericht	-



BESCHRIJVING

New release of the popular premium Villas in SAN PEDRO DEL PINATAR, 600m/8 minutes walk from the beach. These 3 bedroom, 3 bathroom homes of 128m2 build are on minimum 190m2 plots and set in a nice residential area. Each with their own private pool, 52m2 garden and garage. Just 700m from the beaches. These off plan villas will have 2 levels and comprise of a large spacious open plan lounge with dining area and separate kitchen which comes fitted with modern design wall and base units equipped with Hob, oven and extractor fan. The 3 double bedrooms all come with fitted wardrobes and both first floor models have private bathrooms, there is also a family bathroom and utility room on the ground floor. Outside the property a generous garden with drive leading to a garage plus large patio areas offering lots of 'alfresco dining' options for an outdoor kitchen (next to the pool area), a private pool. The properties also come with installed air-con, kitchen appliances and pool cascade. Optional solarium (+15,500€) This 'exclusive' development off private homes are situated in a residential area – close to all amenities(8min walk), park areas, the beach (8min walk), bars, shops and restaurants. The Mar Menor and all the facilities it has to offer is just

a short 10 minute walk away, there are many golf courses nearby. This 'exclusive' development of private homes are situated in a residential area – close to all amenities, walking distance to park areas, the beach, bars, shops and restaurants.



STIJL <ul style="list-style-type: none"> • Modern • Contemporary 	UITZICHT <ul style="list-style-type: none"> • Panoramisch 	AFSTAND NAAR : <div>Strand : 500 m</div> <div>Vliegveld: 20 Km</div> <div>Centrum : 1 Km</div> <ul style="list-style-type: none"> • Tegels • Steen 	ORIËNTATIE <div>South East West</div>
MEUBELS <ul style="list-style-type: none"> • Niet gemeubileerd 	PARKING NEE CARS <div>Garage geen Cars : 1</div>		KEUKEN <ul style="list-style-type: none"> • Open keuken • Ingerichte keuken
TUIN TERRAS <ul style="list-style-type: none"> • Overdekt terras • Open terras • Privé tuin 	EXTRA <ul style="list-style-type: none"> • Inbouwkasten • Veiligheidsdeur • Dubbele beglazing 		





















"OUR EXPERIENCE IS YOUR GUARANTEE"