



REF: # 5981

TORREVIEJA (TORREVIEJA)



INFO

PRIJS: 699.000 €

TYPE HUIS: Villa's

PLAATS: Torrevieja
(Torrevieja)

SLAAPKAMERS: 4

Badkamers: 4

Build (m2): 202

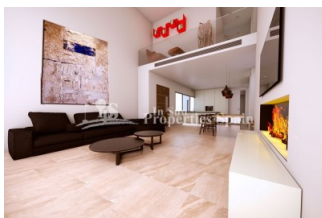
Plot (m2): 360

Terras (m2): 36

Years:

Floor: -

bericht -



BESCHRIJVING

Luxury development near TORRE DEL MORO, TORREVIEJA. ONLY 3 properties remaining; N°1 (corner villa) N°2 & N°3. This modern and stylish project consists of 7 spacious Luxury designed Villas & features; approximately 400m2 plot and 200m2 of floor space comprising; 4 bedrooms & 4 bathrooms, 36m2 sun terrace, 75m2 naturally lit basement, 2 private parking spaces with communal areas & Wooden Pergola. The basement offers natural light and includes a living room, bedroom & bathroom. (The basement can be configured to personal taste at extra cost)* On the ground floor you have an ultra modern living room with kitchen, all on the same level, with access to the garden & Swimming pool area, 1 double bedroom & 1 bathroom. On the first floor; 2 double bedrooms with 2 bathrooms, both en suite and the top floor boasts a roof terrace and solarium with sea views. The town is a vibrant, eclectic mix of locals and foreigners alike; it was built on the strength and prosperity of the salt lakes and was once a sleepy fishing village. Destroyed by an earthquake in 1829 and rebuilt, it is a real melting pot of cultures, not just by its international feel, but due to its mix of new and old

Spanish attitudes and has subsequently become one of the best known resorts on the southern Costa Blanca



STIJL

- Modern
- Contemporary

UITZICHT

- Panoramisch
- Zeezicht

AIRCO

- Centrale airco

AFSTAND NAAR :

Strand : 200 m

Vliegveld: 40 Km

Centrum : 1 Km

- Tegels
- Steen

ORIËNTATIE

South East West

MEUBELS

- Niet gemeubileerd

ALGEMENE WOONRUIMTE

- Opslagruimte
- Badkamer ensuite

KEUKEN

- Open keuken
- Ingerichte keuken
- Graniet bovenblad

TUIN TERRAS

- Overdekt terras
- Open terras
- Aangelegd
- Stenen muur
- Privé tuin

EXTRA

- Inbouwkasten
- Alarm
- Veiligheidsdeur
- Dubbele beglazing
- Videobewaking
- Opbergruimte



















CUADRO DE SUPERFICIES

| PLANTA SÓTANO | |
|----------------------------|----------------------|
| SALA DE MAQUINAS | 16,55 m ² |
| TRASTERO | 28,41 m ² |
| DISTRIBUIDOR | 14,74 m ² |
| ESCALERA | 2,76 m ² |
| TOTAL ÚTIL PS | 62,46 m ² |
| TOTAL CONSTRUIDA PS_GARAJE | 75,20 m ² |

| PLANTA BAJA | |
|--------------------------------------|----------------------|
| HALL | 2,31 m ² |
| ESTAR-COMEDOR | 18,77 m ² |
| COCINA | 15,10 m ² |
| DORMITORIO 1 | 10,02 m ² |
| PASILLO 1 | 2,64 m ² |
| BANO 1 | 3,60 m ² |
| ESCALERA | 0,52 m ² |
| TOTAL ÚTIL PB | 57,96 m ² |
| TOTAL CONSTRUIDA PS_VIVIENDA CERRADA | 70,78 m ² |

| PLANTA PRIMERA | |
|--------------------------------------|----------------------|
| DORMITORIO 2 | 8,10 m ² |
| DORMITORIO 3 | 11,10 m ² |
| PASILLO 2 | 12,61 m ² |
| BANO 2 | 3,42 m ² |
| BANO 3 | 3,60 m ² |
| VESTIDOR | 3,65 m ² |
| TOTAL ÚTIL P1 | 42,48 m ² |
| TOTAL CONSTRUIDA P1_VIVIENDA CERRADA | 56,12 m ² |

| SUP. CONSTRUIDA POR UNIDAD DE VIVIENDA | |
|--|-----------------------|
| TOTAL CONSTRUIDA VIVIENDA CERRADA | 126,90 m ² |
| LAMINA DE AGUA PISCINA | 25,20 m ² |

| SUP. CONSTRUIDA CONJUNTO 6 VIVIENDAS | |
|--------------------------------------|-----------------------|
| TOTAL CONSTRUIDA VIVIENDAS CERRADAS | 761,40 m ² |
| LAMINA DE AGUA PISCINAS | 151,20 m ² |



"OUR EXPERIENCE IS YOUR GUARANTEE"