



REF: # 5971

ORIHUELA COSTA (SAN PEDRO DEL PINTAR)



#### INFO

**PRIJS:** 199.950 €

**TYPE HUIS:** Villa's

**PLAATS:** Orihuela  
Costa (San  
Pedro del  
Pintar)

**SLAAPKAMERS:** 3

**Badkamers:** 2

**Build ( m2 ):** 112

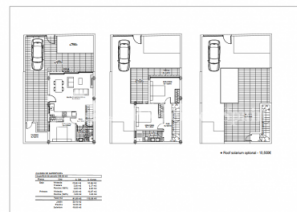
**Plot ( m2 ):** 130

**Terras ( m2 ):** -

**Years:**

**Floor:** -

**bericht** -



#### BESCHRIJVING

Good value Villas located in the popular San Pedro del Pinatar, 10 minutes walk from the Town Hall in an established residential area. This 3 bedroom, 2 bathroom 112m2 villa occupies a 130m2 plot and is exceptional value for money. Situated on a sunny plot filled with light and perfect for enjoying the sun on the terrace, balcony or swimming in your private pool. Inside the villas you will have a large amount of open living space due to the added terrace on the ground floor with large triple door windows allowing huge amounts of light in. As well as this there is a lovely roof terrace option available to enjoy the far reaching views to the nature park. If the outdoor life is what you are looking for these villas have a huge amount to offer. Your almost guaranteed to see a flamingo flying over to the nature reserve which is just 5 minutes away, also you are spoiled for choice with a selection of beautifully looked after blue flag beaches less than 3km away that offer a large selection of water sports. For the keen sports people you can choose from 5 Championship

golf courses all within ten minutes drive. The Pinatar arena is 5 minutes walk away with football, gym, cricket and tennis courts. These villas are close to all amenities and a good selection of bars, restaurants and shops, plus and the villas themselves boast off street parking with a private swimming pool. A fantastic Villa being offered at a fantastic price in a wonderful location, perfect for holiday rentals or a more permanent residence. \*Optional roof solarium available – ask for more details. 10 minutes from Murcia, San Javier Airport



#### STIJL

- Modern
- Contemporary

#### AFSTAND NAAR :

Strand : 3 Km

Vliegveld: 10 Km

Centrum : 1 Km

#### ORIËNTATIE

South East West

#### MEUBELS

- Niet gemeubileerd

#### PARKING NEE CARS

: 1

#### ALGEMENE WOONRUIMTE

- Badkamer ensuite

#### KEUKEN

- Open keuken
- Ingerichte keuken

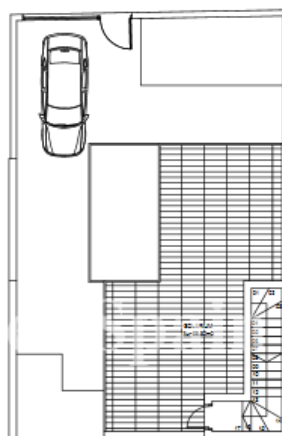
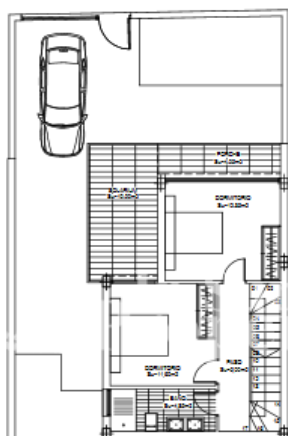
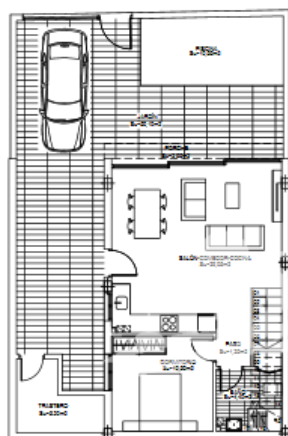
#### TUIN TERRAS

- Overdekt terras
- Open terras
- Privé tuin

#### EXTRA

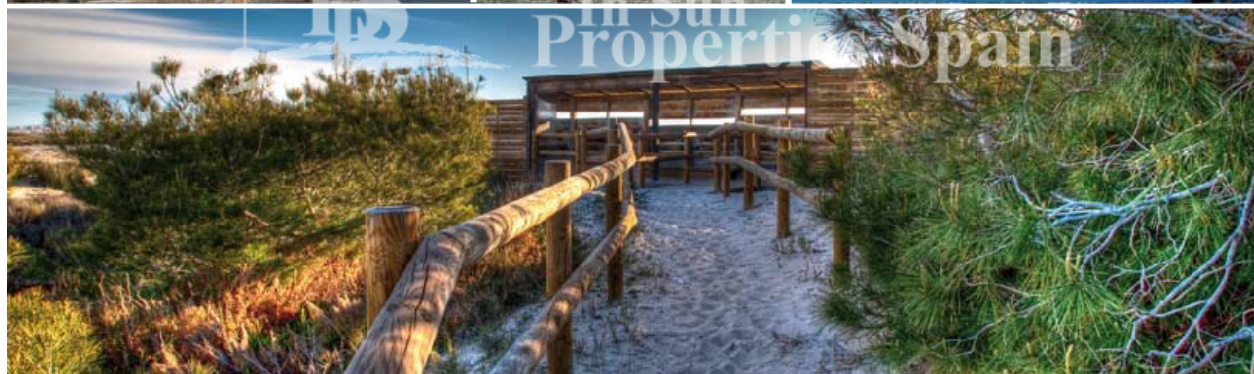
- Inbouwkasten
- Veiligheidsdeur
- Dubbele beglazing





• Roof solarium optional - 15.500€

CUADRO DE SUPERFICIES			
Superficie de parcela 300.50 m <sup>2</sup>			
Planta	Uso	S. Util.	S. Constr.
Baja	Vivienda	42.00 m <sup>2</sup>	54.00 m <sup>2</sup>
	Trastero	5.00 m <sup>2</sup>	4.27 m <sup>2</sup>
	Porch (100%)	3.85 m <sup>2</sup>	3.85 m <sup>2</sup>
Primera	Vivienda	22.00 m <sup>2</sup>	46.87 m <sup>2</sup>
	Porch (100%)	4.65 m <sup>2</sup>	4.65 m <sup>2</sup>
Total m <sup>2</sup>		91.30 m <sup>2</sup>	112.39 m <sup>2</sup>
Jardín		50.10 m <sup>2</sup>	
Piscina		10.25 m <sup>2</sup>	
Solarium		40.60 m <sup>2</sup>	



**"OUR EXPERIENCE IS YOUR GUARANTEE"**