



REF: # 4537

ORIHUELA COSTA (VISTABELLA GOLF COURSE)



INFO

PRIJS:	254.900 €
TYPE HUIS:	Villa's
PLAATS:	Orihuela Costa (Vistabella Golf Course)
SLAAPKAMERS:	3
Badkamers:	2
Build (m2):	124
Plot (m2):	318
Terras (m2):	19
Years:	
Floor:	-
bericht	-



BESCHRIJVING

LUXURY SINGLE STOREY Villas located in VISTABELLA GOLF RESORT. There are two Villas to choose from. Villa FORMENTOR - Last Villa remains - 3 bedroom, 2 bathroom Villa with 113m2 of living area on a 318m2 plot. The open plan accommodation is bright and spacious and boasts a spacious utility room and storage room. There are designed with lots of glass allowing the sunlight through and providing access to the 25m2 terrace. You have the option of having the garden landscaped with parking space within your plot or even adding a private swimming pool and solarium, on this particular model it would be a split 2 level solarium perfect for alfresco dining and sunbathing (additional costs)The second option is the Dominica (NOW SOLD OUT). These villas have 3 bedrooms, 2 bathrooms with a total living space of over 105m2, on plots again of over 300m2, allowing space for a private pool and parking. Again with this model there is a spacious utility room and storage room and the possibility to add a solarium. Vistabella Golf Resort is located between Los Montesinos and San Miguel de Salinas. It is in a privileged location with views towards the salt lakes and sea. It boasts plentiful

amounts of open space, wide streets lined with trees and surround by both the 18-hole Golf Course and the sweet smelling lemon and orange groves. There is a large commercial area within the resort, home to a number of international restaurants, bars, shops, supermarket, ATM and Pharmacy with future plans to continue expansion of the commercial areas to include a doctors, dentist etc. You are within a 15 minute drive to 7 Golf courses, 10 minutes from San Miguel de Salinas and Los Montesinos and 20 minutes to Villamartin. Only 25 minutes from the coast and only 35 minutes from Alicante International Airport.



STIJL	UITZICHT	AFSTAND NAAR :	ORIËNTATIE
<ul style="list-style-type: none">• Modern• Contemporary	<ul style="list-style-type: none">• Panoramisch	Strand : +10 Km	South East West
		Vliegveld: 40 Km	
		Centrum : 8 Km	
MEUBELS	PARKING NEE CARS	BELASTING	<ul style="list-style-type: none">• Tegels• Steen
<ul style="list-style-type: none">• Gemeubileerd	: 1	: 100 €	
KEUKEN	TUIN TERRAS	EXTRA	
<ul style="list-style-type: none">• Open keuken• Ingerichte keuken• Graniet bovenblad	<ul style="list-style-type: none">• Overdekt terras• Open terras• Aangelegd• Privé tuin	<ul style="list-style-type: none">• Inbouwkasten• Veiligheidsdeur• Dubbele beglazing	







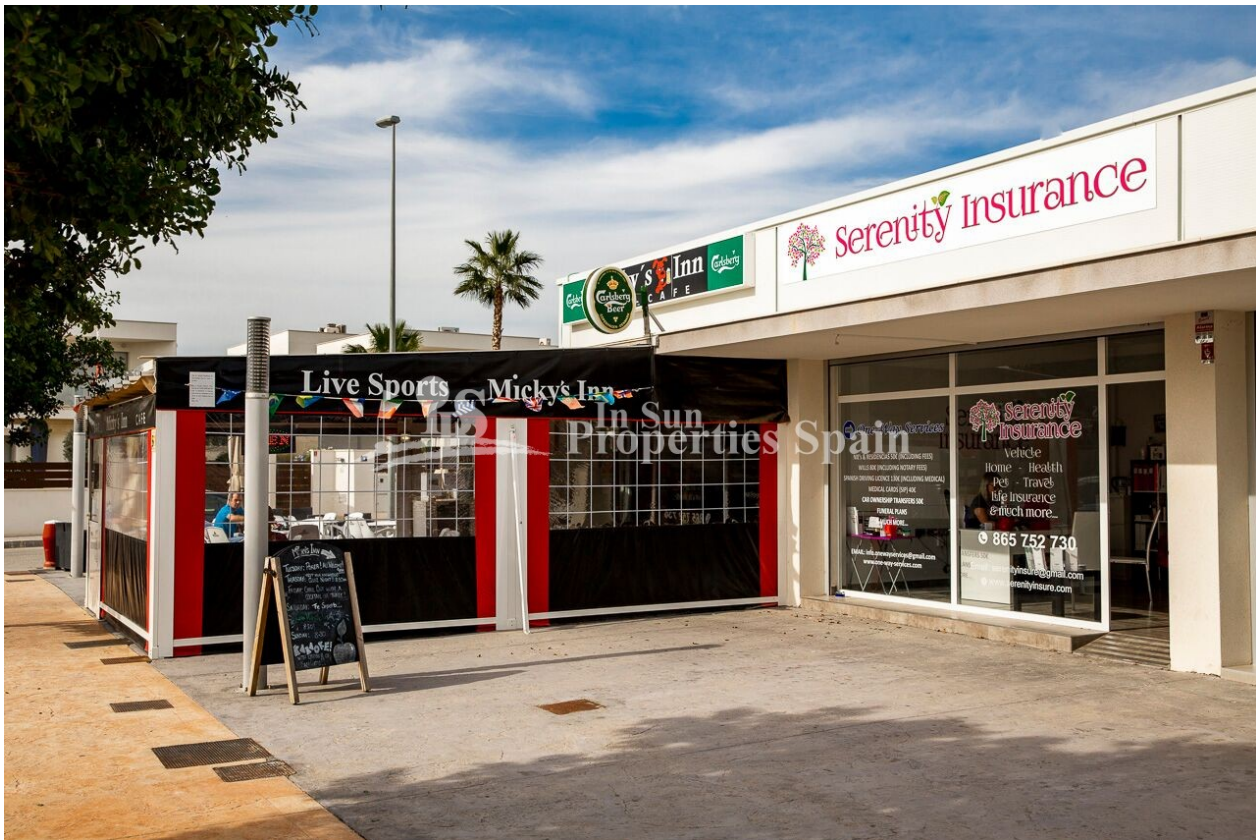












"OUR EXPERIENCE IS YOUR GUARANTEE"