



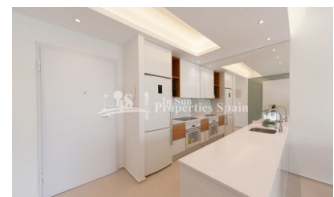
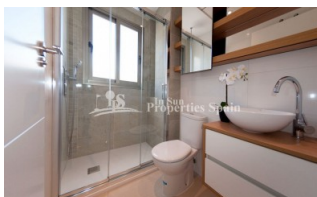
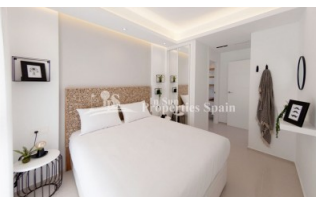
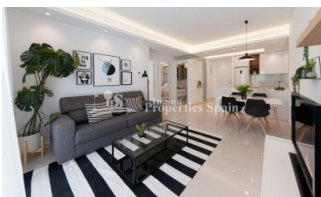
REF: # 5925

QUESADA-ROJALES (DONA PEPA)



#### INFO

<b>PRIJS:</b>	222.000 €
<b>TYPE HUIS:</b>	Appartement
<b>PLAATS:</b>	Quesada-Rojales (Dona Pepa)
<b>SLAAPKAMERS:</b>	3
<b>Badkamers:</b>	2
<b>Build ( m2 ):</b>	96
<b>Plot ( m2 ):</b>	-
<b>Terras ( m2 ):</b>	129
<b>Years:</b>	
<b>Floor:</b>	-
<b>bericht</b>	-



#### BESCHRIJVING

Delivery September 2019. A STUNNING new development in DONA PEPA of 2 and 3 bedroom, 2 bathroom Ground and Top Floor Apartments. Ground floor of minimum 96m2 come with private 129m2 garden, from €222,000 and First Floor of minimum 96m2 come with private 75m2 roof solarium, from €248,000. These Apartments are from a well renowned builder with over 40 years experience, offering their same signature in terms of design, quality and finish. A home you will be proud to own! Doña Pepa is an elegant urbanization with wide avenues, wonderful views to the Natural Park and the salt lakes with a wide range of leisure activities and all the necessary amenities without having to take a car. It is only 30 minutes away from international airports, 35 minutes

from Alicante and 5 minutes from the most beautiful beaches of the Costa Blanca.It is an area with good annual temperatures and a great atmosphere. The area of Doña Pepa has a widely varied infrastructure offering a multitude of shops, supermarkets, restaurants, cafes, medical centers, pharmacies, golf courses, banks, a 4\* Hotel with a Spa, a church, a social center, a cultural center, sports areas, an aquapark, a school, two natural parks, a religious center and high quality shopping complexes.



<b>STIJL</b> <ul style="list-style-type: none"> <li>• Modern</li> <li>• Contemporary</li> </ul>	<b>UITZICHT</b> <ul style="list-style-type: none"> <li>• Panoramisch</li> </ul>	<b>AIRCO</b> <ul style="list-style-type: none"> <li>• Centrale airco</li> </ul>	<b>AFSTAND NAAR :</b> <div>Strand : +10 Km</div> <div>Vliegveld: 30 Km</div> <div>Centrum : 1 Km</div> <ul style="list-style-type: none"> <li>• Tegels</li> <li>• Steen</li> </ul>
<b>ORIËNTATIE</b> <div>South East West</div>	<b>PARKING NEE CARS</b> <div>: 1</div>	<b>ALGEMENE WOONRUIMTE</b> <ul style="list-style-type: none"> <li>• Badkamer ensuite</li> </ul>	
<b>KEUKEN</b> <ul style="list-style-type: none"> <li>• Open keuken</li> <li>• Ingerichte keuken</li> <li>• Graniet bovenblad</li> </ul>	<b>TUIN TERRAS</b> <ul style="list-style-type: none"> <li>• Overdekt terras</li> <li>• Open terras</li> <li>• Aangelegd</li> <li>• Privé tuin</li> <li>• Gemeenschappelijke tuin</li> </ul>	<b>EXTRA</b> <ul style="list-style-type: none"> <li>• Inbouwkasten</li> <li>• Veiligheidsdeur</li> <li>• Dubbele beglazing</li> </ul>	<b>ENERGETIC CERTIFIED</b> <div> </div>

**"OUR EXPERIENCE IS YOUR GUARANTEE"**