



REF: # 4557

ORIHUELA COSTA (LA CAÑADA)



INFO

PRIJS: 375.000 €

TYPE HUIS: Villa's

PLAATS: Orihuela
Costa (La
Cañada)

SLAAPKAMERS: 3

Badkamers: 3

Build (m2): 195

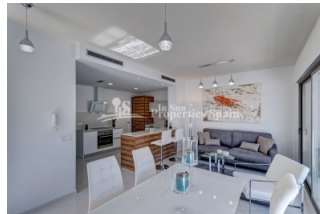
Plot (m2): 240

Terras (m2): -

Years:

Floor: -

bericht -



BESCHRIJVING

KEY READY- Residential development in MIRADOR DE SAN MIGUEL DE SALINAS with 32 villas of modern design with 3 bedrooms and 3 bathrooms that offer two different models, SOFIA and MARINA. Builds from 195m2 occupying plots from 283m2 to 325m2, all with private swimming pool of 6m x 3m and a private parking space. They are all SOUTH FACING. Based on the two level Villas; To the Ground floor you find entrance hall, living room with dining area, bedroom, kitchen, gallery, bathroom and a large terrace. To the First floor; 2 bedrooms with exit to a terrace and 2 bathrooms. In addition the Villa boasts underfloor heating in the bathrooms, insulated and sound proofed windows, automatic blinds, pre- installation of air conditioning and a fenced plot. Optional extras would include; furnishings with decoration and lighting, electrical appliances and air conditioning machines. Securitas direct alarm. SPA Jacuzzi on the swimming pool. Floor heating throughout. All at additional cost. Conveniently positioned between the centre of San Miguel de Salinas (3km) and Villamartin (3km), these villas are out of the hustle and

bustle of busy Villamartin but close enough to enjoy all the amenities of neaby San Miguel Centre and Villamartin. The closest beaches are approximately 8km away. The village of San Miguel de Salinas sits on a hill above the pink Laguna de Torrevieja and offers impressive views over the countryside to this working lake with its salt piles. It is a quaint inland village with a traditional church square, town hall, tourist office, a main high street, band stand, a municipal open air swimming pool for use during the summer and a busy street market every Wednesday morning. Nearest Aiports: Alicante International approx 45 minutes drive Murcia San Javier approx 25 minutes drive



STIJL	UITZICHT	AIRCO	AFSTAND NAAR :
<ul style="list-style-type: none"> • Modern • Contemporary 	<ul style="list-style-type: none"> • Panoramisch • Bergzicht 	<ul style="list-style-type: none"> • Centrale airco 	Strand : 8 Km Vliegveld: 30 Km Centrum : 3 Km
ORIËNTATIE	PARKING NEE CARS	KEUKEN	ENERGETIC CERTIFIED
South	: 1	<ul style="list-style-type: none"> • Open keuken • Ingerichte keuken • Graniet bovenblad 	<div> <div> <div>A</div> <div>dekt terras</div> </div> <div> <div>B</div> <div>dekt terras</div> </div> <div> <div>C</div> <div> <ul style="list-style-type: none"> • Buitenverlichting </div> </div> <div> <div>D</div> <div>hangende</div> </div> <div> <div>E</div> <div></div> </div> <div> <div>F</div> <div></div> </div> <div> <div>G</div> <div></div> </div> </div> <div>IN PROGRESS</div>

"OUR EXPERIENCE IS YOUR GUARANTEE"