



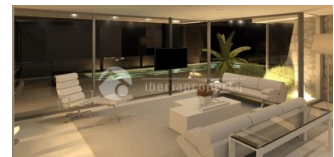
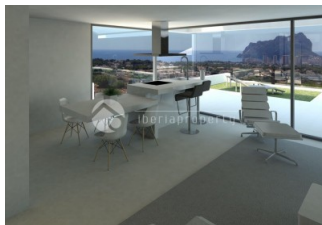
REF: # 3211

CALPE/MORAIRA (CALPE CENTRO)



#### INFO

<b>PRIJS:</b>	795.000 €
<b>TYPE HUIS:</b>	Villa's
<b>PLAATS:</b>	Calpe/Moraira (Calpe centro)
<b>SLAAPKAMERS:</b>	3
<b>Badkamers:</b>	2
<b>Build ( m2 ):</b>	200
<b>Plot ( m2 ):</b>	900
<b>Terras ( m2 ):</b>	-
<b>Years:</b>	
<b>Floor:</b>	-
<b>bericht</b>	-




#### BESCHRIJVING

SPECTACULAR VILLA in an elevated position situated just 2 km from the wonderful, sandy beaches of Calpe. With an open view to the sea and Benissa coastline this villa nestles against the hillside facing completely South. With its open plan kitchen design and many large glass windows, the property has a very bright and airy feel in its interior. Being a new build villa it will have all the modern touches you would expect from a villa built in 2015. The property is fitted with air conditioning and heating throughout. The garden is beautifully designed, partly tiled and the beautifully designed pool is surrounded by top quality decking. Outside the garden is low maintenance and landscaped with water irrigation and feeding system, a range of Mediterranean plants, trees and shrubs, fruit trees including. Barbecue and plenty of space for entertaining.

#### ENERGETIC CERTIFIED



STIJL	UITZICHT	AIRCO	ORIËNTATIE
<ul style="list-style-type: none"> <li>• Modern</li> </ul>	<ul style="list-style-type: none"> <li>• Zeezicht</li> <li>• Bergzicht</li> </ul>	<ul style="list-style-type: none"> <li>• Centrale airco</li> </ul>	South <hr/>
KEUKEN	TUIN TERRAS	ENERGETIC CERTIFIED	
<ul style="list-style-type: none"> <li>• Open keuken</li> <li>• Ingerichte keuken</li> <li>• Graniet bovenblad</li> </ul>	<ul style="list-style-type: none"> <li>• Overdekt terras</li> <li>• Open terras</li> <li>• Buitenverlichting</li> <li>• Automatische besproeiing</li> <li>• Fruitbomen</li> <li>• Palmbomen</li> <li>• Aangelegd</li> <li>• Stenen muur</li> <li>• Elektrische poort</li> <li>• BBQ/grill</li> <li>• Privé tuin</li> </ul>	 <p>The image shows a vertical energy efficiency scale with seven horizontal bars labeled A through G. The bars are colored in a gradient from green at the top to red at the bottom. Bar A is green, B is green, C is light green, D is yellow, E is orange, F is red-orange, and G is red. To the right of these bars is a vertical green bar with the text 'IN PROGRESS' written vertically inside it.</p>	

***"OUR EXPERIENCE IS YOUR GUARANTEE"***