

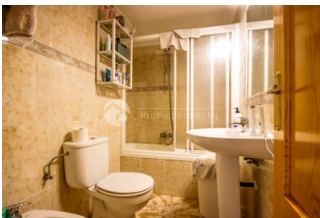


REF: # 13289

ALICANTE (CAMPELLO)



INFO	
PRIJS:	229.000 €
TYPE HUIS:	Appartement
PLAATS:	Alicante (Campello)
SLAAPKAMERS:	2
Badkamers:	1
Build ( m2 ):	65
Plot ( m2 ):	-
Terras ( m2 ):	10
Years:	1985
Floor:	1
bericht	-




## BESCHRIJVING

Enjoy life by the sea in this bright apartment located in a well-established residential complex in El Campello, just 50 meters from the beach. The complex offers year-round amenities for the whole family. Highlights  
 Unbeatable location: second line, 50 m from the beach. Onsite parking: several parking areas within the complex — you'll always find a spot. Two large communal pools. Restaurant open all year within the complex. Pádel and tennis courts, children's playground, and spacious green areas for relaxing. Close to all services: supermarkets, transport, shops, and restaurants. Layout Entrance hall Separate kitchen Living-dining room with covered terrace (perfect as an extra year-round living area) 2 bedrooms 1 bathroom Ideal for Those seeking a second home steps from the sand. Investors looking for strong holiday rental demand thanks to the location and amenities. Families who value sports and leisure facilities without leaving the complex. Notes: The complex operates year-round and offers excellent accessibility with parking inside the premises. If you'd like, I can add floor area, floor level, orientation, community fees, or highlight photos you share to tailor the ad even more.

## ENERGETIC CERTIFIED





<b>STIJL</b>	<b>AFSTAND NAAR :</b>	<b>ORIËNTATIE</b>	<b>MEUBELS</b>
<ul style="list-style-type: none"> <li>• Mediterraean</li> </ul>	Strand : 50 m Vliegveld: 10 Km Centrum : 100 m	East	<ul style="list-style-type: none"> <li>• Gemeubileerd</li> </ul>
<b>PARKING NEE CARS</b>	<ul style="list-style-type: none"> <li>• Steen</li> </ul>	<b>KEUKEN</b>	<b>TUIN TERRAS</b>
Garage geen Cars : 1		<ul style="list-style-type: none"> <li>• Dichte keuken</li> <li>• Ingerichte keuken</li> </ul>	<ul style="list-style-type: none"> <li>• Overdekt terras</li> <li>• Open terras</li> <li>• Buitenverlichting</li> <li>• Tennisbaan</li> <li>• Automatische besproeiing</li> <li>• Fruitbomen</li> <li>• Palmbomen</li> <li>• Speeltuin</li> <li>• Aangelegd</li> <li>• Omheind</li> <li>• Stenen muur</li> <li>• Buitenkeuken</li> <li>• BBQ/grill</li> <li>• Paddle tennisbaan</li> <li>• Gemeenschappelijke tuin</li> </ul>
<b>VERWARMING</b>	<b>EXTRA</b>	<b>ENERGETIC CERTIFIED</b>	
<ul style="list-style-type: none"> <li>• Centraal elektrisch</li> </ul>	<ul style="list-style-type: none"> <li>• Inbouwkasten</li> <li>• Veiligheidsdeur</li> <li>• Sateliet TV</li> <li>• Lift</li> <li>• Internet</li> </ul>	 <p>The image shows a vertical energy efficiency scale with seven horizontal bars labeled A through G. The bars are colored from dark green at the top to red at the bottom. A vertical green bar on the right side of the scale is labeled 'IN PROGRESS'.</p>	

**"OUR EXPERIENCE IS YOUR GUARANTEE"**