



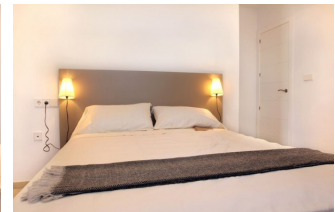
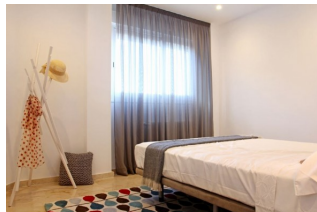
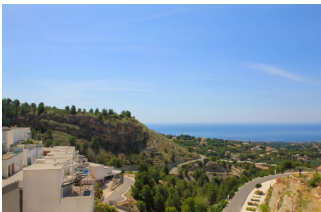
REF: # 8992

ALTEA



#### INFO

<b>PRIJS:</b>	733.255 €
<b>TYPE HUIS:</b>	Villa's
<b>PLAATS:</b>	Altea
<b>SLAAPKAMERS:</b>	4
<b>Badkamers:</b>	4
<b>Build ( m2 ):</b>	313
<b>Plot ( m2 ):</b>	-
<b>Terras ( m2 ):</b>	-
<b>Years:</b>	-
<b>Floor:</b>	-
<b>bericht</b>	-



#### BESCHRIJVING

A residential estate full of light, with large interior spaces, unique architecture and natural surroundings, panoramic views of the Mediterranean Sea and the skyline of Benidorm. A closed residential complex, with detached homes designed with state of the art architecture, where each residence has its own exclusive design, making it unique. The houses are outstanding for their natural light and large interior spaces, with layouts offering 3 and 4 bedrooms, 3 and 4 bathrooms, an open kitchen, living rooms and dining rooms of different shapes, terrace, swimming room, barbeque, a locked garage and a lift. With direct access to the motorway, 10 Km from Benidorm, only 50 Km from Alicante airport and 100 km from Valencia airport. The picturesque coastal town of Altea offers all the services and leisure activities of a great city, while providing at the same time an open viewpoint for nature and the intense blue of the Mediterranean. Immersed in natural surroundings that are a perfect scenario for a getaway break, relaxing holidays or, why not make it your home?

#### ENERGETIC CERTIFIED



UITZICHT

- Zeezicht

KEUKEN

- Ingerichte keuken































***"OUR EXPERIENCE IS YOUR GUARANTEE"***