



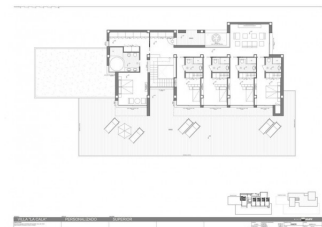
REF: # 6349

BENITACHELL



#### INFO

<b>PRIJS:</b>	2.450.000 €
<b>TYPE HUIS:</b>	Villa's
<b>PLAATS:</b>	Benitachell
<b>SLAAPKAMERS:</b>	6
<b>Badkamers:</b>	6
<b>Build ( m2 ):</b>	1.165
<b>Plot ( m2 ):</b>	2.393
<b>Terras ( m2 ):</b>	-
<b>Years:</b>	-
<b>Floor:</b>	-
<b>bericht</b>	-



#### BESCHRIJVING

Villa la Cala, a property with enormous dimensions, situated on a plot of 2,493sqm, in the exclusive Jazmines residential area at the Cumbre del Sol urbanization, an area with access restricted solely to property owners, which houses many luxury properties. Villa la Cala is distributed over three levels, fruit of a unique and exclusive design, with spacious, open and sunny rooms, all facing towards the Mediterranean Sea, making the most of the fabulous views. The access to the house is on the upper floor, where 5 of the total of 6 bedrooms of the house are situated. The main bedroom comprises a spacious walk-in wardrobe and an en-suite bathroom with a shower and a bath with sea views. The other 4 bedrooms on this floor also have their own en-suite shower rooms and wardrobes. All the bedrooms have direct access to the terrace and share a communal TV room. The steps guide us down to the main floor of the house, the daytime area, with a spacious living room, a kitchen with an island, a storage room, a laundry room, another bedroom with en-suite bathroom, a guest toilet and parking for 3 vehicles. In addition, there is a large outdoor terrace to relax on and enjoy the infinity pool with 60sqm of water surface, plus a spacious veranda with an outdoor dining area and

relaxation area where you can continue enjoying the uninterrupted sea views. This fantastic property also contains an open plan area of over 100sqm, situated on the lowest floor, which can be finished off depending on the requirements of the purchaser.



UITZICHT

- Zeezicht

KEUKEN

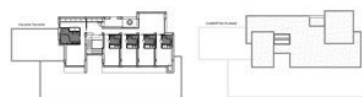
- Ingerichte keuken

## PROPERTY GALLERY

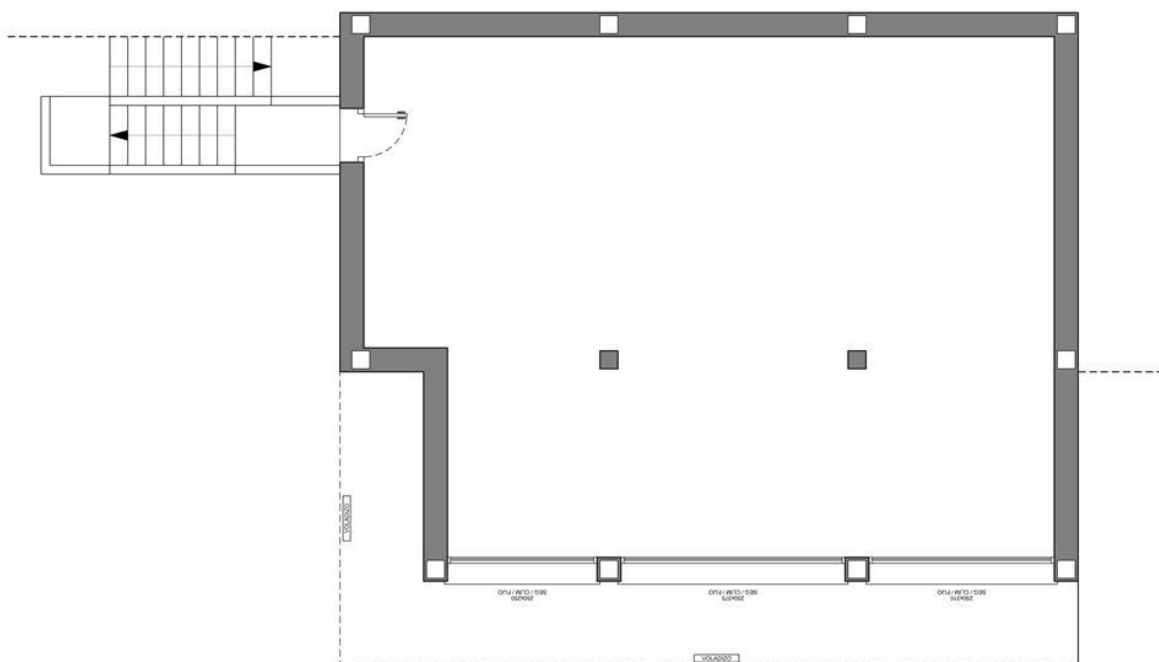









Escala Gráfica:



MODELO	ESTILO	CALIDAD		GRUPO 	
VILLA "LA CALA"		PERSONALIZADO		SUPERIOR	
<b>OBSERVACIONES</b> ESCALÓN EN SALIDAS AL EXTERIOR VENTILACIONES A 20cm. DEL TECHO.		<b>PORTON</b> ALUMINO CARPINTERIA ALUMINO	<b>SUPERFICIES CONSTRUIDAS</b> VACIO SANITARIO	112.40 m <sup>2</sup>	<b>NUMERO PLANO</b> 54398
		274 RF			<b>CLIENTE</b> GARSIVA S.L.
					<b>FECHA</b> 05-06-16
					<b>PARCELA</b> 963-673 LA CLUMBER DEL SOL



VILLA "LA CALA"

PERSONALIZADO

SUPERIOR

GRUPO VAPF

54399



RELLENO

RESIDENCIAL JAZMINES

LA CUMBRE DEL SOL

GRUPO VAPF

<p>CONSERVACIONES</p> <p>SEGUN EL SALON AL EXTERIOR VENTILACIONES A ZONA DEL TENDIDO</p>		<p>EXTERIORES CONTIGUAS</p> <p>PARCELA 802</p> <p>PARCELA 872</p> <p>TERMINADA</p> <p>PLANTA</p>	<p>1200 00 m<sup>2</sup></p> <p>1100 00 m<sup>2</sup></p> <p>85 15 m<sup>2</sup></p> <p>100 00 m<sup>2</sup></p>	<p>NUMERO PLANO</p> <p>54397</p> <p>FECHA</p> <p>03-10-18</p>	<p>CLIENTE</p> <p>GARDUÑA, S.L.</p> <p>PARCELA</p> <p>85-47-2</p>
--	--	--	--	---	---

Image not found  
<https://www.cmsinmo.com/imagenes/uploads/inmu/4/6349/86348.jpg>

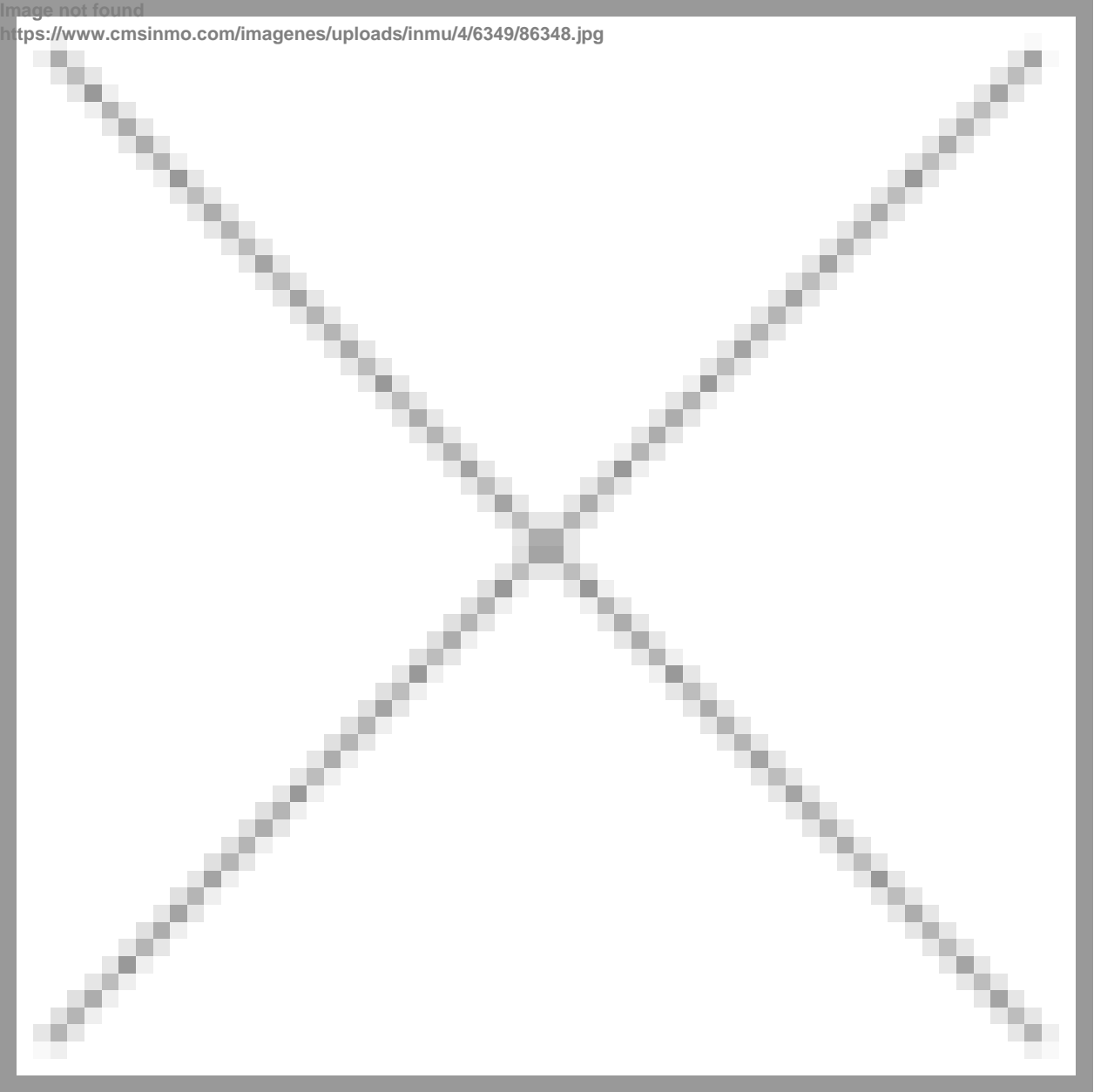




Image not found  
<https://www.cmsinmo.com/imagenes/uploads/inmu/4/6349/96348.jpg>

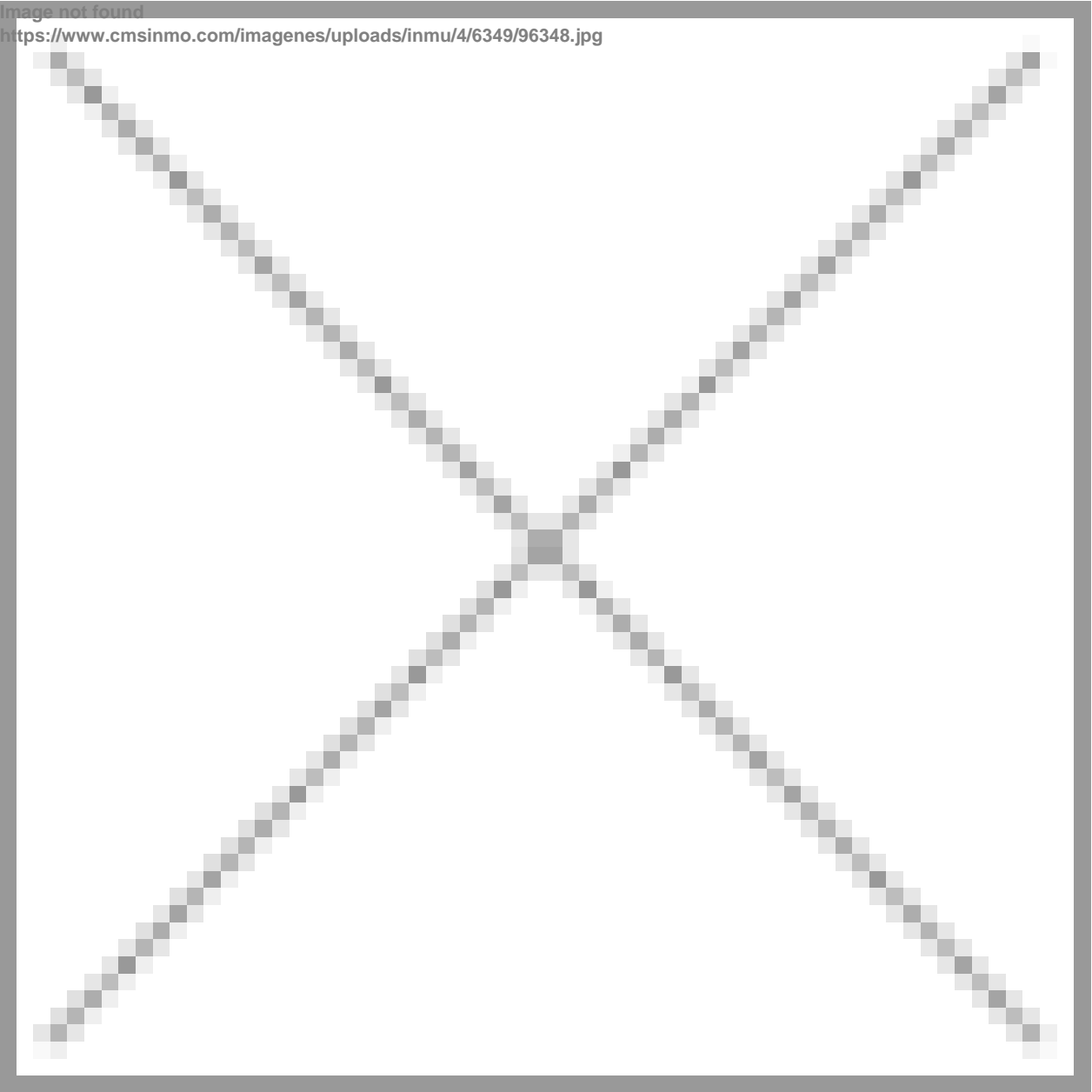


Image not found  
<https://www.cmsinmo.com/imagenes/uploads/inmu/4/6349/106348.jpg>

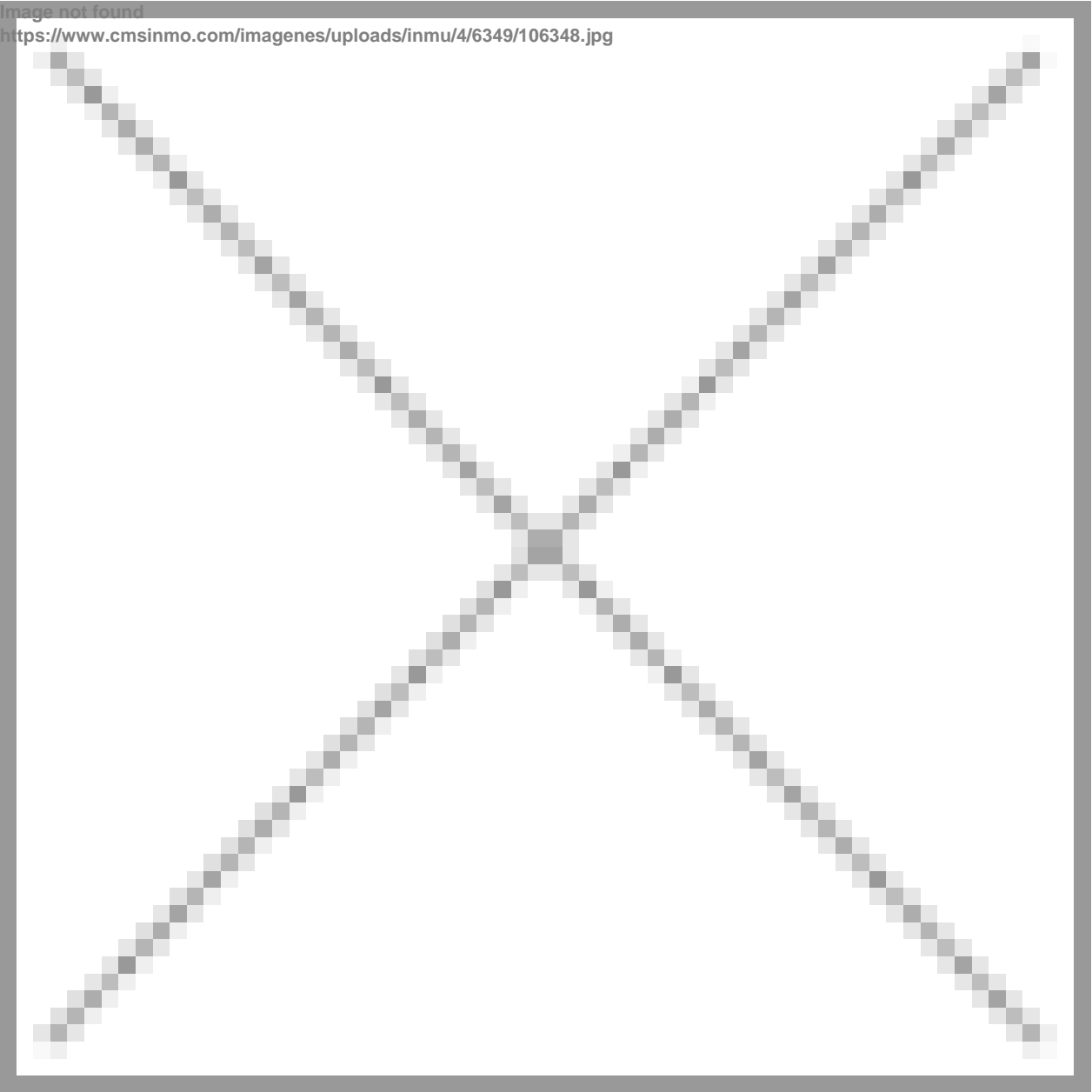


Image not found  
<https://www.cmsinmo.com/imagenes/uploads/inmu/4/6349/116348.jpg>

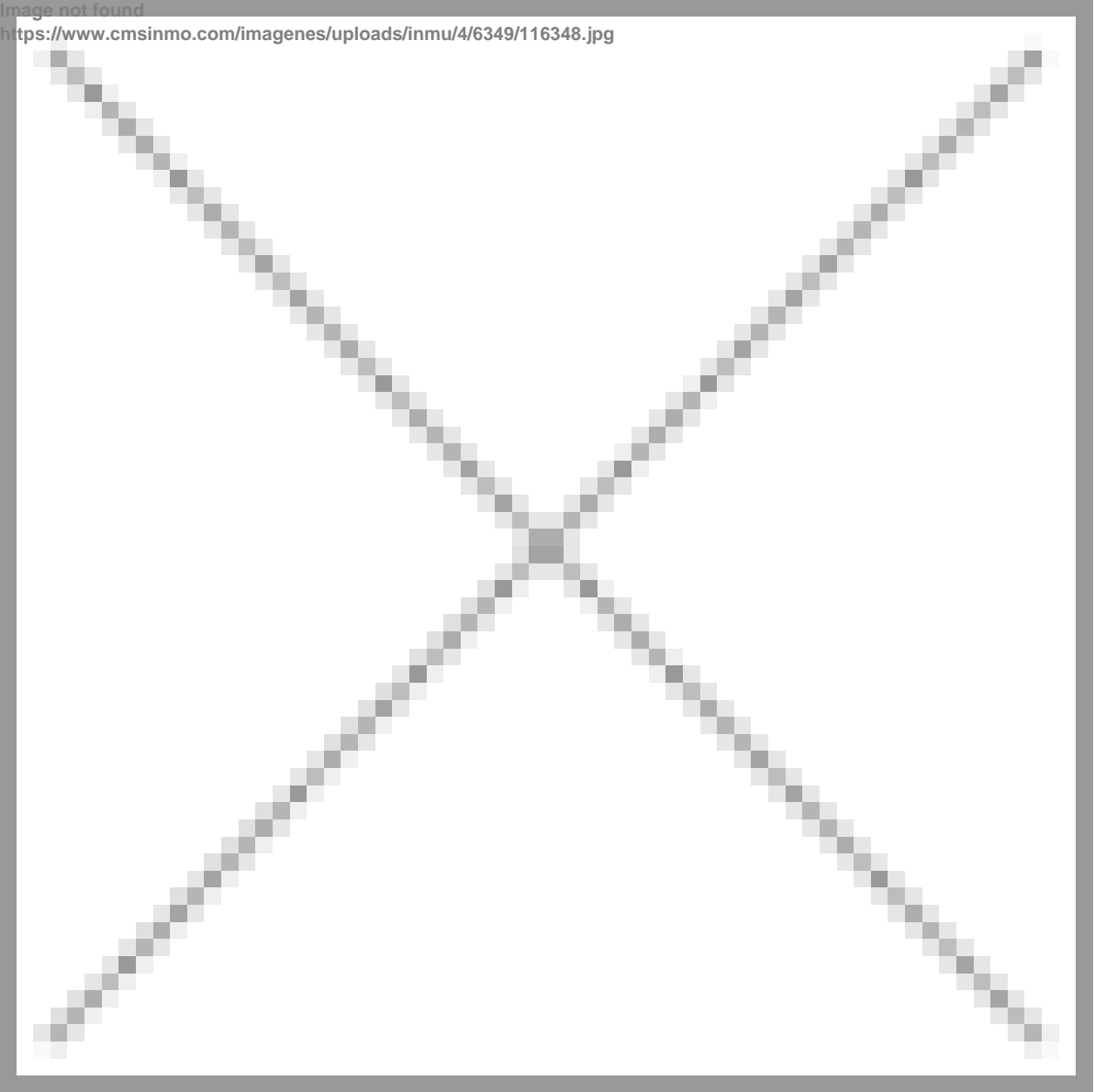


Image not found  
<https://www.cmsinmo.com/imagenes/uploads/inmu/4/6349/126348.jpg>

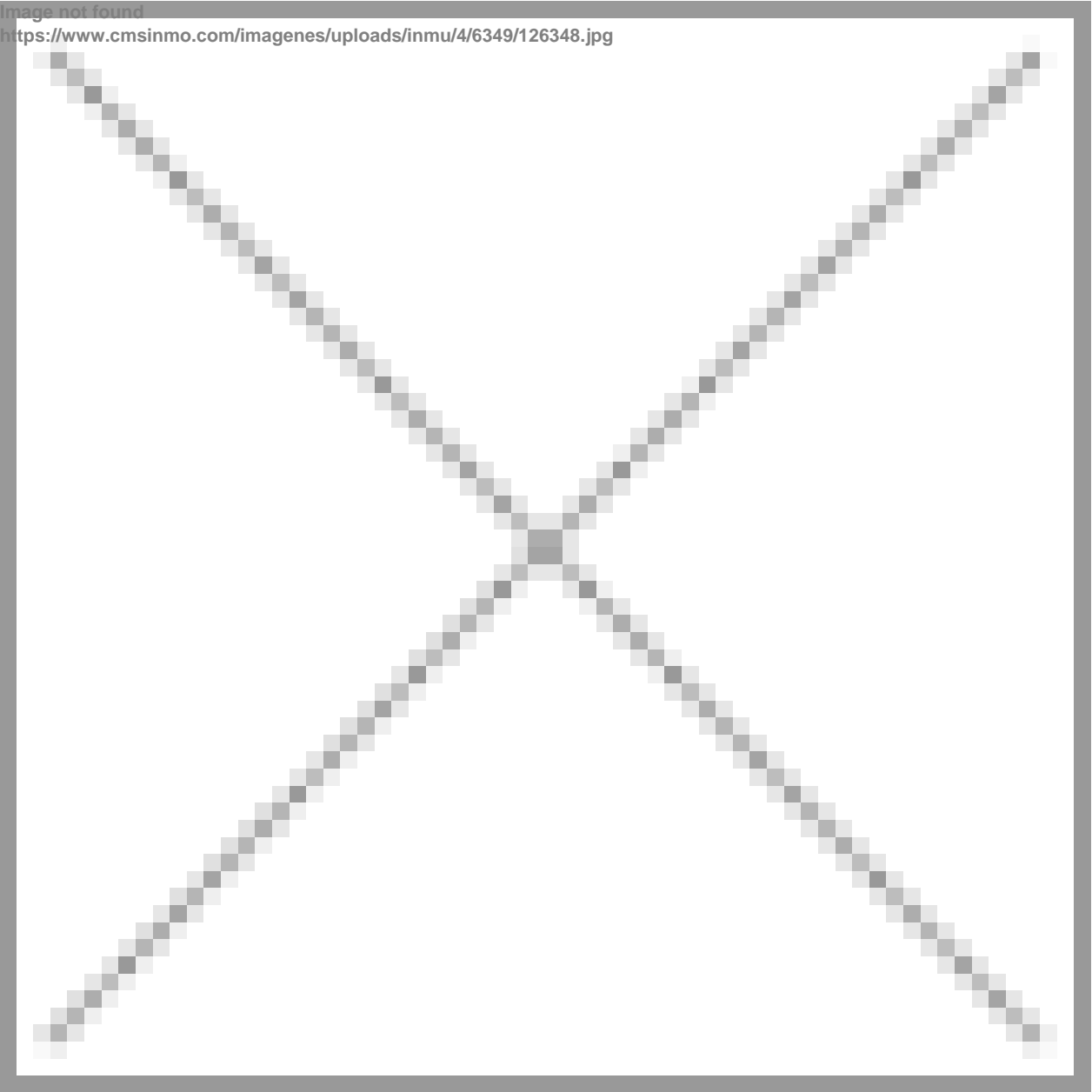


Image not found  
<https://www.cmsinmo.com/imagenes/uploads/inmu/4/6349/136348.jpg>

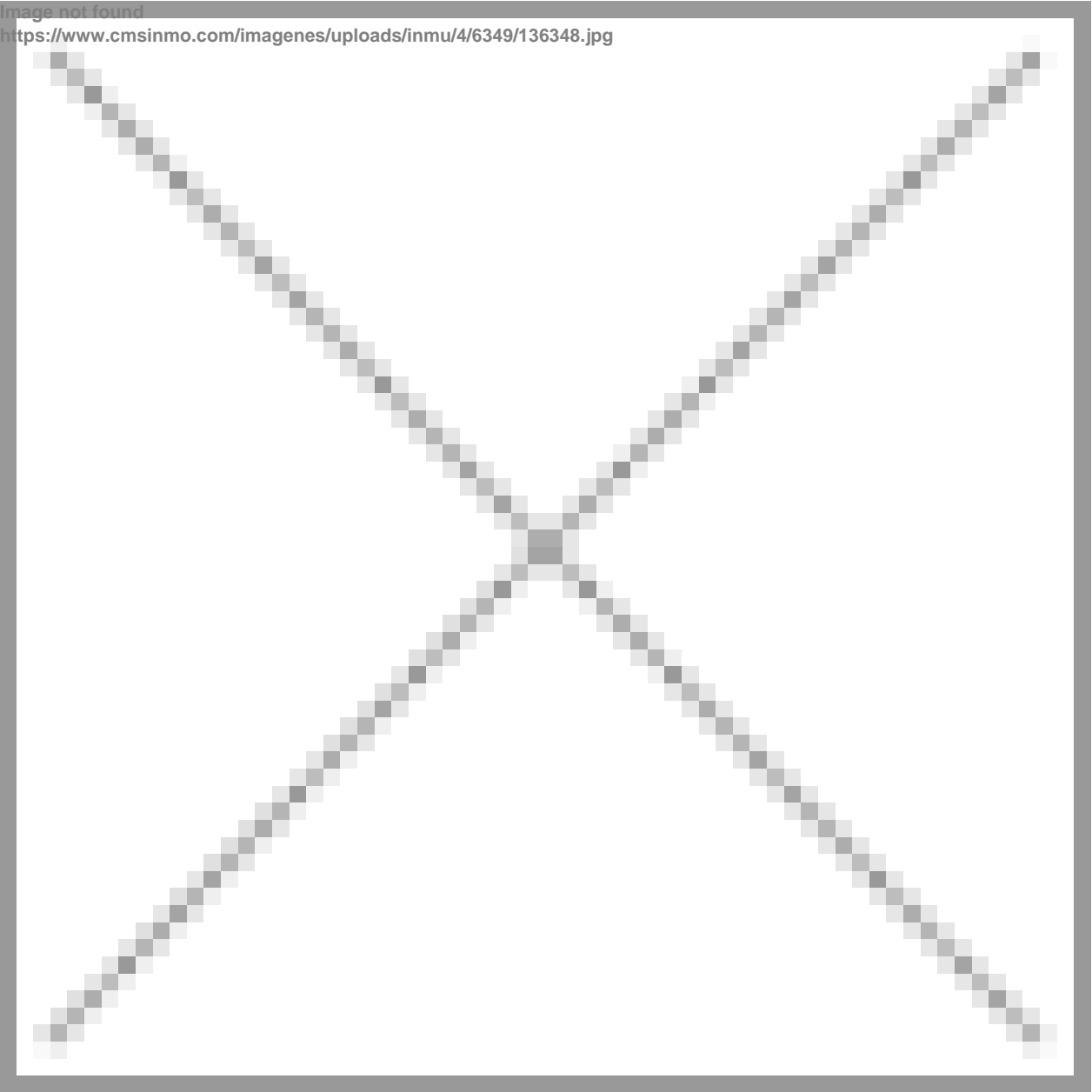




Image not found  
<https://www.cmsinmo.com/imagenes/uploads/inmu/4/6349/146348.jpg>

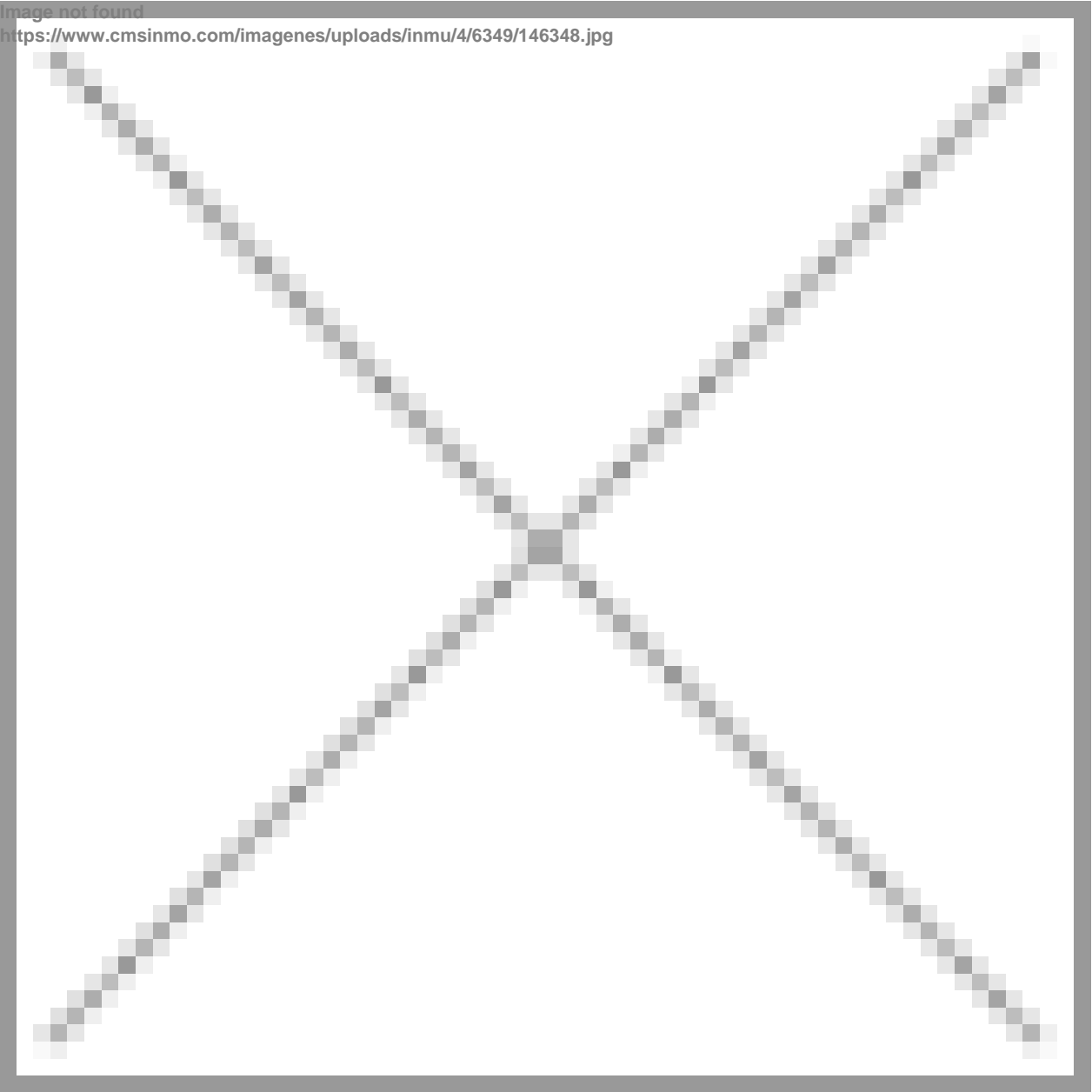


Image not found  
<https://www.cmsinmo.com/imagenes/uploads/inmu/4/6349/156348.jpg>

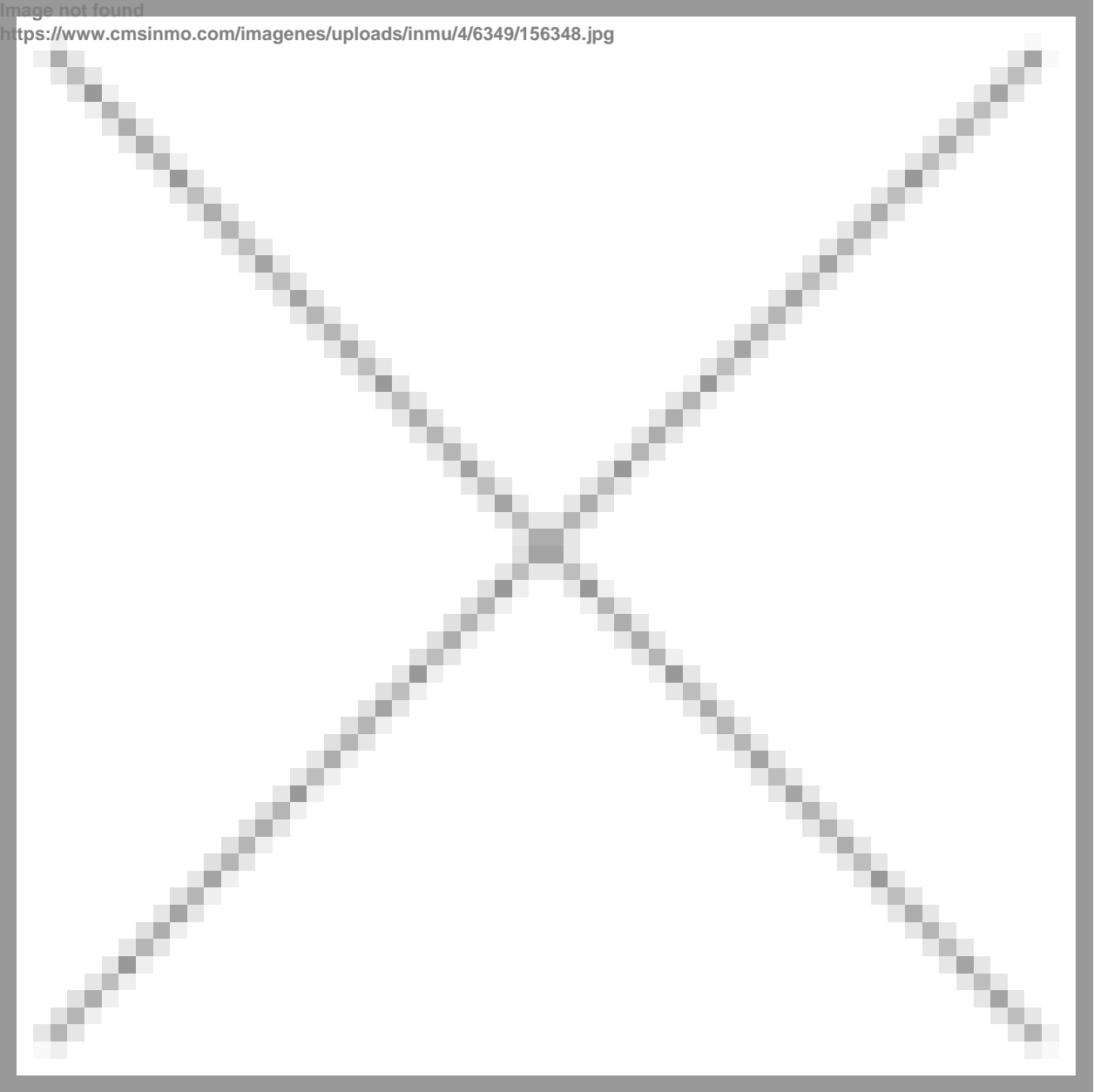


Image not found  
<https://www.cmsinmo.com/imagenes/uploads/inmu/4/6349/166348.jpg>

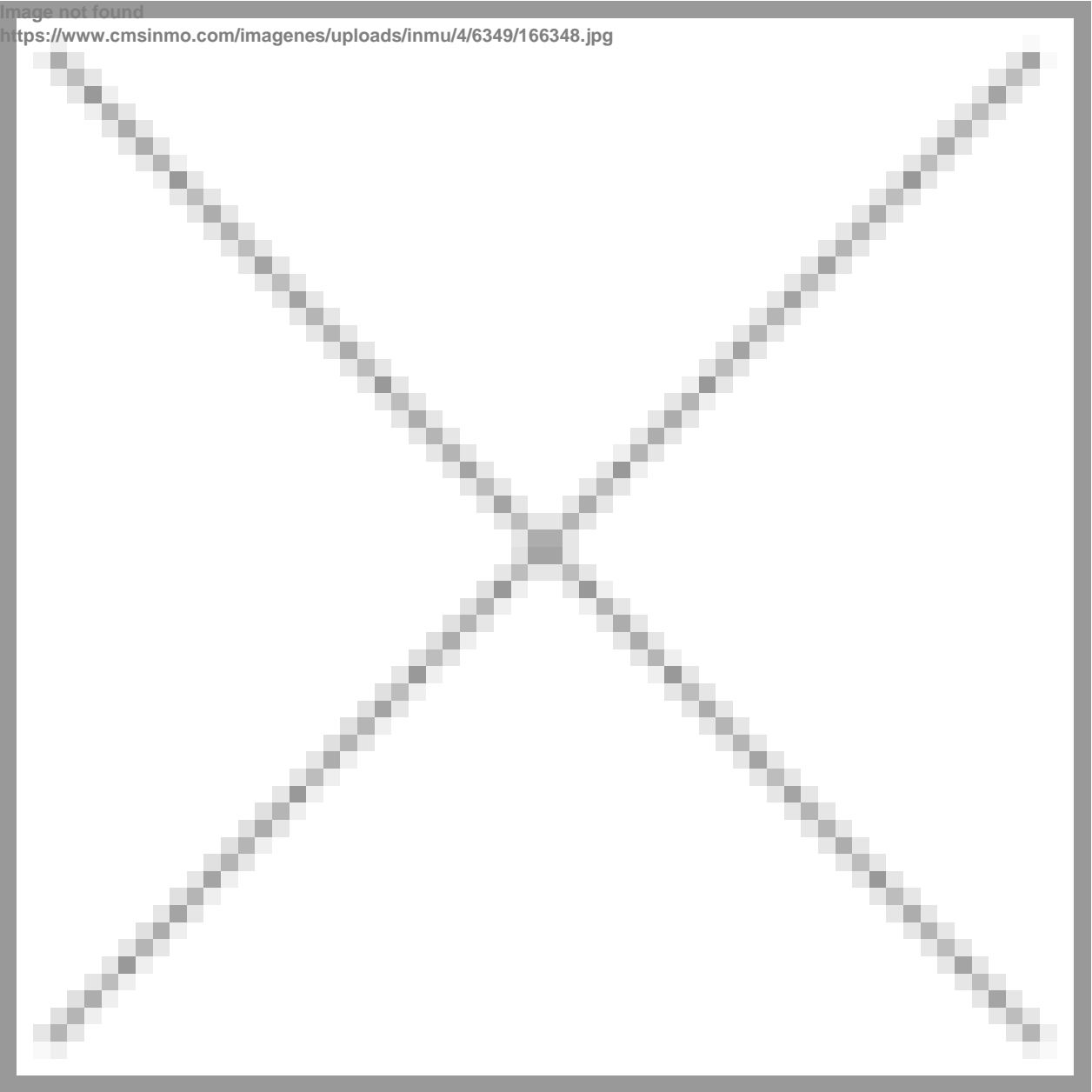


Image not found  
<https://www.cmsinmo.com/imagenes/uploads/inmu/4/6349/176348.jpg>

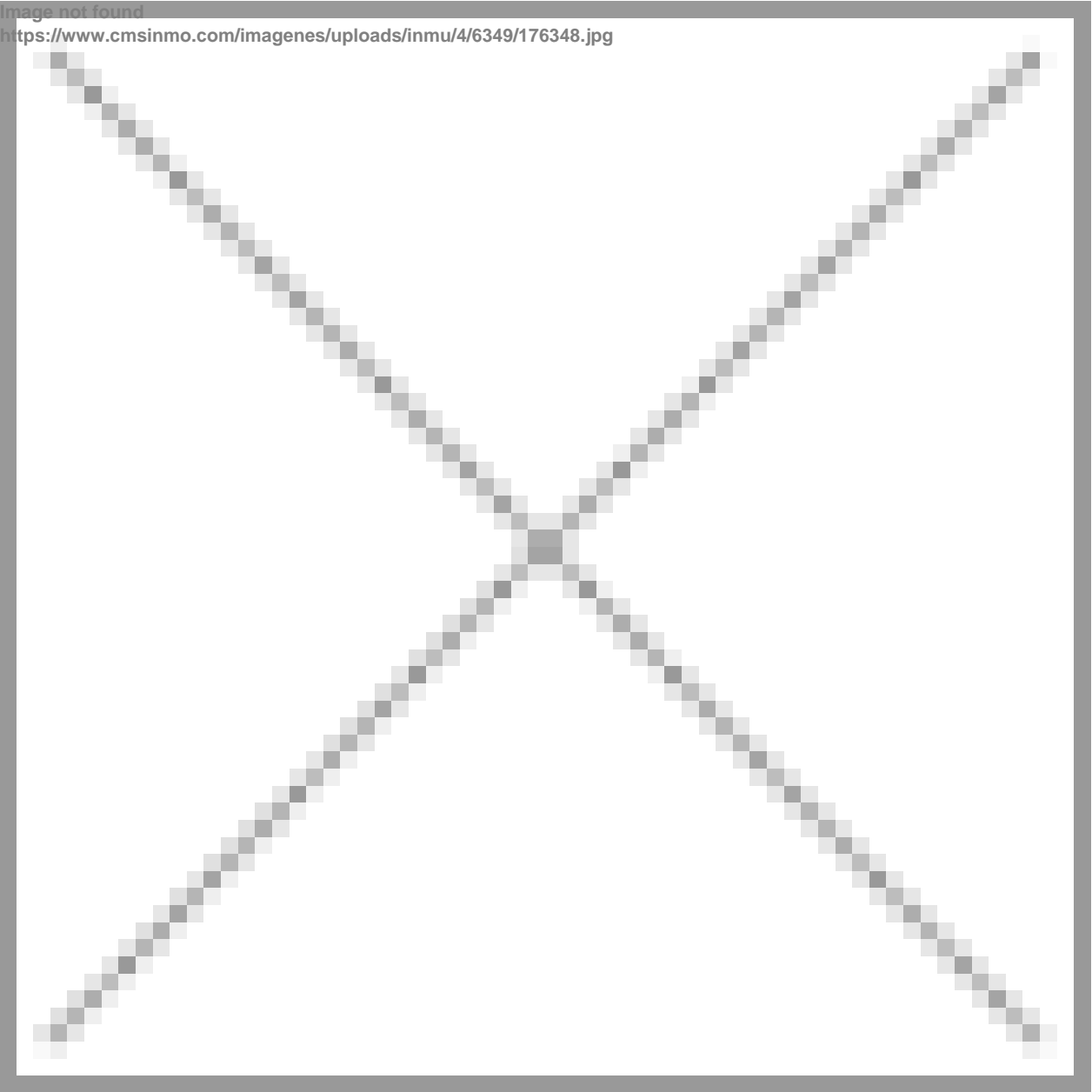


Image not found  
<https://www.cmsinmo.com/imagenes/uploads/inmu/4/6349/186348.jpg>



***"OUR EXPERIENCE IS YOUR GUARANTEE"***