



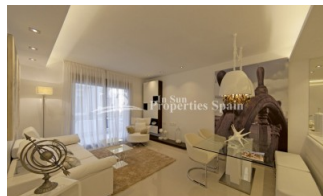
REF: # 5948

QUESADA-ROJALES (DONA PEPA)



#### INFO

<b>PRIJS:</b>	188.000 €
<b>TYPE HUIS:</b>	Appartement
<b>PLAATS:</b>	Quesada-Rojales (Dona Pepa)
<b>SLAAPKAMERS:</b>	3
<b>Badkamers:</b>	2
<b>Build ( m2 ):</b>	102
<b>Plot ( m2 ):</b>	-
<b>Terras ( m2 ):</b>	35
<b>Years:</b>	
<b>Floor:</b>	-
<b>bericht</b>	-



#### BESCHRIJVING

Gran Sol is a new KEY READY residential located in Doña Pepa, an elegant urbanisation with wide avenues, wonderful views to the Natural Park and the salt lakes with a wide range of leisure activities and all the necessary amenities. Available are these 3 bedrooms, 2 bathroom Ground Floor, Corner Apartments of 102m2 with 35m2 private garden with tiled area and artificial grass, storage room, access to four swimming pools, beautiful Green areas, Gym and a private gated parking inside the residential. Each block also has a lift that leads directly to the solarium. Its high-tech architecture with pure lines combines perfectly with its predominant colour (white) giving a sensation of harmony. Doña Pepa is a modern urbanisation belonging to Ciudad Quesada and has all the amenities which include supermarkets, bars, hotel and shops as well as a bank. Ciudad Quesada town centre is a ten minute walk from Doña Pepa. In Ciudad Quesada itself you will find international supermarkets, restaurants, banks, a medical centre as well as a water park. The property is ideally located if you are a golf enthusiast, with La Marquesa Golf Club just a five minute drive away. The nearest beaches are at

Guardamar/Campomar and La Mata ten minutes drive away. Nearest Airports: San Javier (Murcia) - Approx 30 minute drive Alicante Airport - Approx 30 minute drive



## STIJL

- Modern
- Contemporary

## UITZICHT

- Panoramisch

## AFSTAND NAAR :

Strand : 7 Km

Vliegveld: 30 Km

Centrum : 1 Km

- Tegels
- Steen

## ORIËNTATIE

South East West

## PARKING NEE CARS

: 1

## ALGEMENE WOONRUIMTE

- Opslagruimte
- Gym

## KEUKEN

- Open keuken
- Ingerichte keuken

## TUIN TERRAS

- Overdekt terras
- Open terras
- Aangelegd
- Stenen muur
- BBQ/grill
- Privé tuin
- Gemeenschappelijke tuin

## EXTRA

- Inbouwkasten
- Veiligheidsdeur
- Dubbele beglazing
- Lift





















**"OUR EXPERIENCE IS YOUR GUARANTEE"**