



REF: # 5945

TORREVIEJA (TORREVIEJA)



INFO

PRIJS: 595.000 €

TYPE HUIS: Villa's

PLAATS: Torrevieja
(Torrevieja)

SLAAPKAMERS: 3

Badkamers: 3

Build (m2): 233

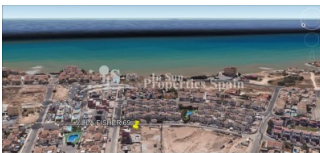
Plot (m2): 425

Terras (m2): 69

Years:

Floor: -

bericht -



BESCHRIJVING

Living is easy in this impressive 233m2 detached Villa located in Torre del Morro, TORREVIEJA. With delivery in October 2018 this Villa is distributed over three floors with 69m2 roof solarium offering sea views. The floor plan encompasses 3 bedrooms with plenty of room for study, sleep and storage, 3 bathrooms with under floor heating and a sleek kitchen that flows through to the dining area. There is also a semi-basement which offers endless possibilities (gym, home cinema, additional bedrooms/bathrooms etc). The generously proportioned accommodation effortlessly flows from the open plan living space to the terrace and zen patio beyond. The 425m2 plot also boasts 34m2 private infinity swimming pool, jacuzzi and private parking. 300m (less than a 5 minute walk) to the beach (Cala del Moro/Cala del Mojon) and situated on the Torrevieja - La Mata coast road, this stunning Villa is just 550m from the panoramic viewpoint La Torre del Moro which represents the early watchtowers which gave the town its name. This is a place which recreates the historic roots of Torrevieja and from which beautiful photographs of the sea and sea coves can be obtained. 550m to the

nearest supermarket and 300m to the nearest public school. Torrevieja is a seaside city approximately 50km south of Alicante City. Over recent years the local economy has hugely expanded due to the tourist industry and Torrevieja is a bustling hub with all the services needed for a holiday or as a permanent residence. 40 minutes from Alicante International Airport. Don't let this dream pass you by!

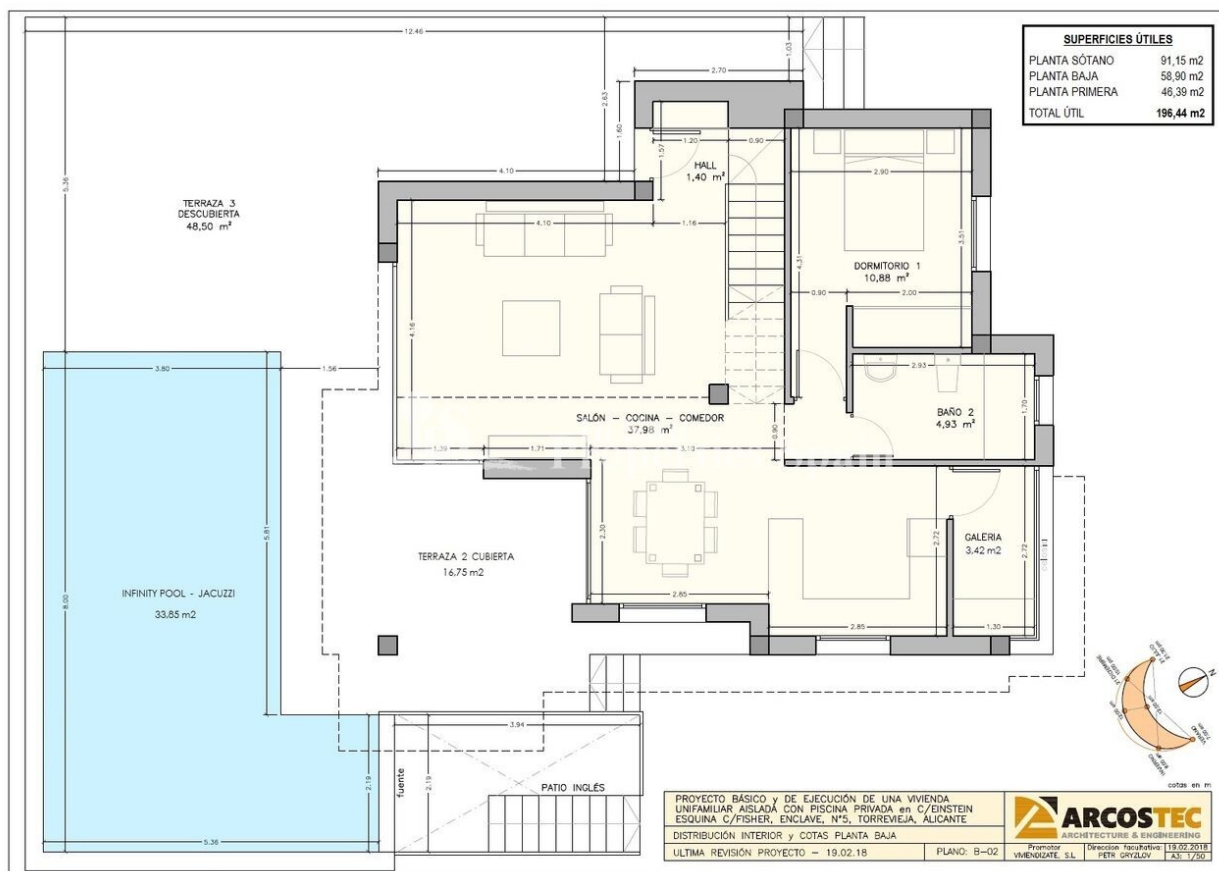
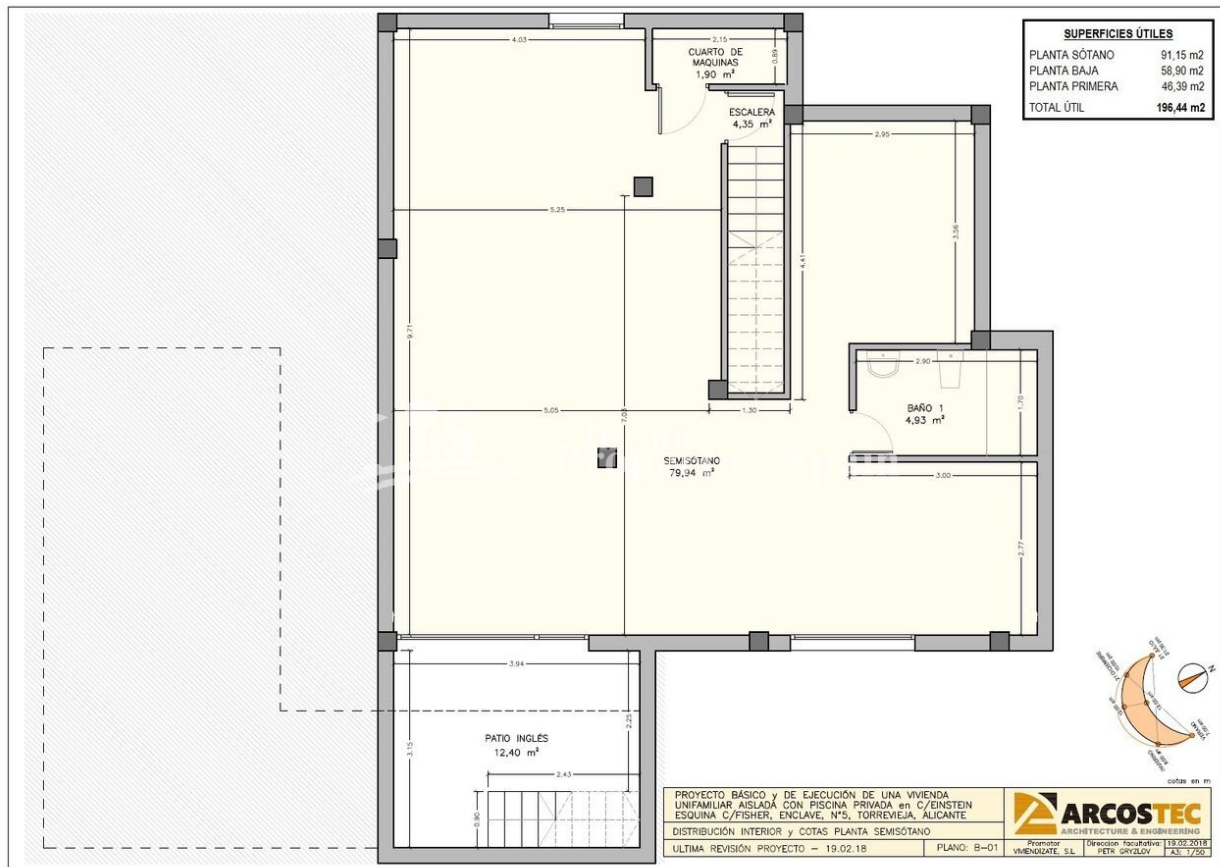


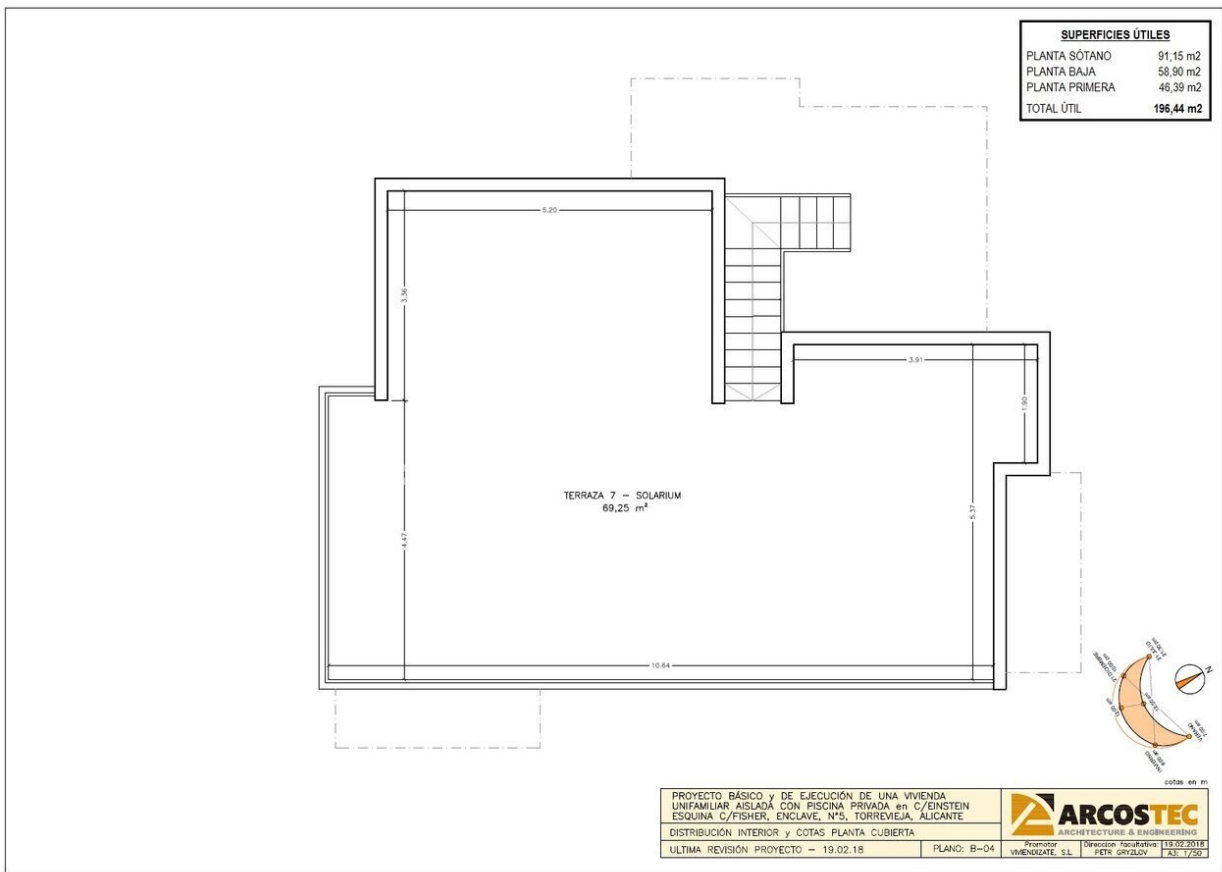
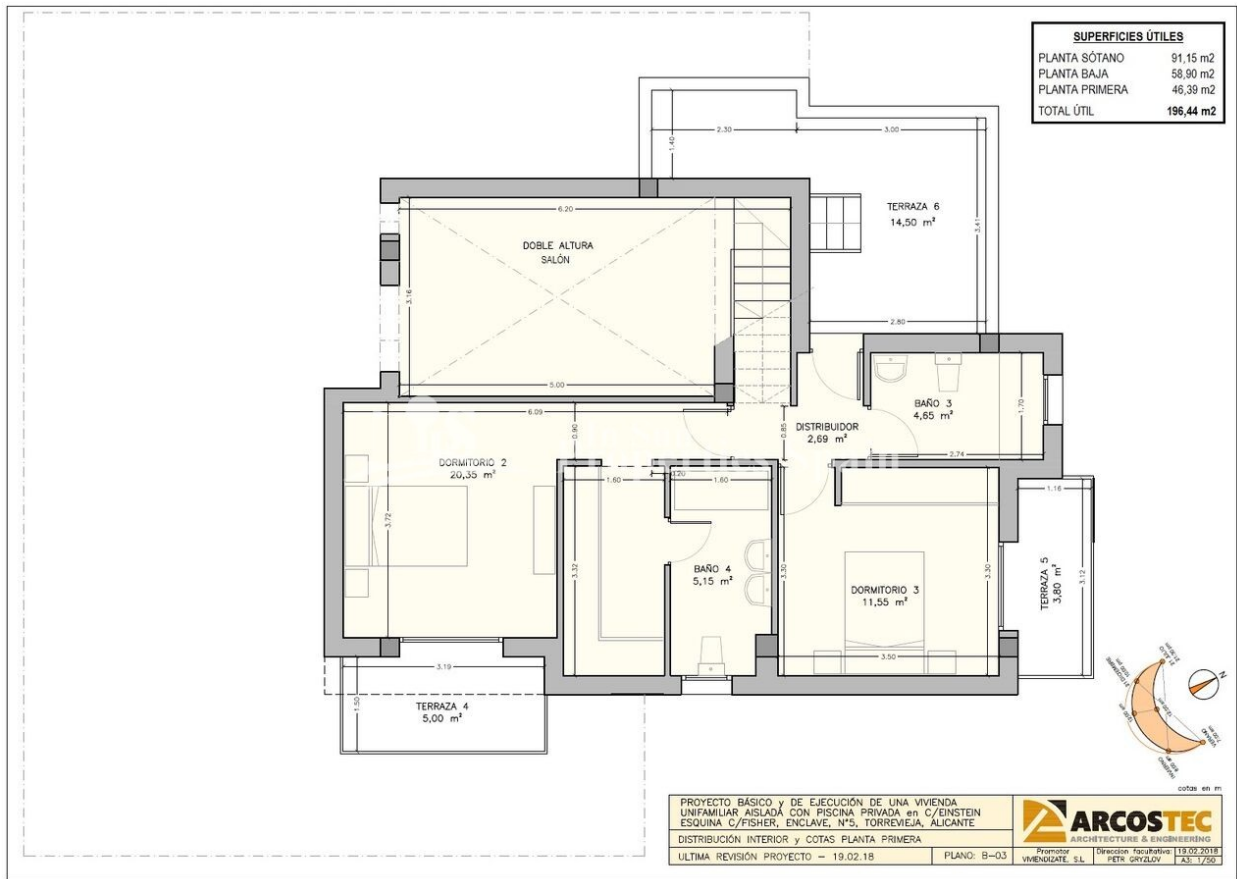
STIJL <ul style="list-style-type: none">• Modern• Contemporary	UITZICHT <ul style="list-style-type: none">• Zeezicht	AFSTAND NAAR : <div>Strand : 500 m</div> <div>Vliegveld: 50 Km</div> <div>Centrum : 1 Km</div>	ORIËNTATIE <div>South west</div> <ul style="list-style-type: none">• Tegels• Steen
MEUBELS <ul style="list-style-type: none">• Niet gemeubileerd	PARKING NEE CARS <div>Garage geen Cars : 1</div> <div>: 1</div>	ALGEMENE WOONRUIMTE <ul style="list-style-type: none">• Opslagruimte• Badkamer ensuite	
KEUKEN <ul style="list-style-type: none">• Open keuken• Ingerichte keuken• Graniet bovenblad	TUIN TERRAS <ul style="list-style-type: none">• Overdekt terras• Open terras• Aangelegd• Omheind• Elektrische poort• Privé tuin	VERWARMING <ul style="list-style-type: none">• Vloerverwarming badkamers	EXTRA <ul style="list-style-type: none">• Buiten jacuzzi• Inbouwkasten• Veiligheidsdeur• Dubbele beglazing• Wasruimte

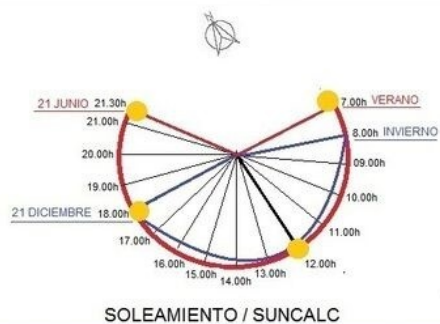
PROPERTY GALLERY











**SITUACIÓN
TORREVIEJA**

SUPERFICIES

VILLA FISHER - 69		Superficie Construida	
Planta Principal y Planta Alta	134,70m ²	Main Level & Top Floor	
Semi-Sótano	98,72m ²	Basement	
Total construidos vivienda	233,42m²	Total Housing	
Terrazas Descubiertas	141,05m ²	Terrace	
Terraza cubierta	16,75m ²	Covered-Terrace	
Patio Inglés	12,40m ²	Courtyard	
Total Terrazas	170,20m²	Total Terraces	
TOTAL	403,62m²	TOTAL	
TOTAL PARCELA	424,70m²	TOTAL PLOT	

PLANTA PRINCIPAL	Supeq. Útil	MAIN LEVEL
Salon-Comedor-Cocina	37,98 m ²	Living-Dining-kitchen
Dormitorio n°1	10,88 m ²	Bedroom No.1
WC n°2	4,93 m ²	Wc No.2
Hall	1,40 m ²	Hall
lavadero	3,42 m ²	Laundry room
Escalera	4,00 m ²	Stairs
Porche-Entrada	13,56 m ²	Porch-Entrance
Terraza Cubierta	16,75 m ²	Covered-Terrace
Terraza Chill-Out	30,34 m ²	Chill-Out Terrace
PLANTA ALTA	Supeq. Útil	TOP FLOOR
Dormitorio n°2 -Suite	20,35 m ²	Bedroom No.2 -Suite
Wc-Suite n°4	5,15 m ²	Wc No.4 Suite
Terraza-Suite n°4	5,00 m ²	Terrace No.4 Suite
Dormitorio n°3	11,55 m ²	Bedroom No.3
Terraza n°5	3,80 m ²	Terrace No.5
Wc n°3	4,65 m ²	Wc No.3
Pasillo	2,69 m ²	Hallway
Terraza n°6	14,50 m ²	Terrace No.6
PLANTA SOLARIUM	Supeq. Útil	FLOOR SOLARIUM
Solárium	69,25 m ²	Solarium
PLANTA SEMI-SÓTANO	Supeq. Útil	BASEMENT FLOOR
Semi-Sótano	91,15 m ²	Basement
Patio Inglés	12,40 m ²	Courtyard

"OUR EXPERIENCE IS YOUR GUARANTEE"