



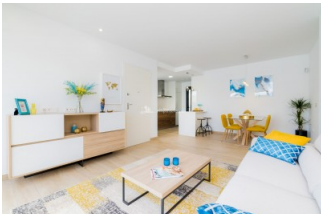
REF: # 6756

TORREVIEJA (LA SIESTA - SAN LUIS)



INFO

PRIJS:	289.000 €
TYPE HUIS:	Villa's
PLAATS:	Torrevieja (La Siesta - San Luis)
SLAAPKAMERS:	3
Badkamers:	2
Build (m2):	89
Plot (m2):	260
Terras (m2):	92
Years:	
Floor:	-
bericht	-



BESCHRIJVING

A stunning new development of Detached Villas close to the Habaneras Shopping Centre in TORREVIEJA. The development comprises of 9 exclusive Villas on one level or two level both with solarium (the two level with Salt Lake Views from the roof terrace). They form part of a community with communal pool and Tennis Court. The Model Eva is a one level Villa with solarium. Minimum 89'44m2 Villas with 3 bedrooms, 2 bathrooms on minimum 226m2 plots with private 3x5m pool, parking within the plot and the garden is finished with artificial grass and 3ft palm tree. Set on one level with modern open plan living/dining space, modern fitted kitchen with Bosch extractor fan, 3 bedrooms , 2 bathrooms, both with underfloor heating and a laundry area of 2m2 under the stairs leading up to the 81m2 roof solarium. The roof terrace is finished with shower, TV connection, waterpoints and lightpoints. In addition you have a 110l aerothermal boiler, pre-installation of AC, 33cm wide insulated walls, interior LED lighting and electric shutters. Located just off the N-332 minutes from the Habaneras Shopping Centre, Carrefour, the Police

station and Torrevieja Aqua Park. Torrevieja is situated on the Costa Blanca, approximately 45 minutes south of Alicante airport and less than 4km to the beaches. The town is surrounded by excellent urbanisations, all with pools and beautiful gardens and the whole area enjoys fabulous beaches with fine sand and crystal clear waters. Torrevieja is voted by WHO (World Health Organisation) as one of the top 10 healthiest places in the world to live, this is due to the properties of the salt lakes.

ENERGETIC CERTIFIED

energy house

Image type unknown

<https://www.iberiaproperty.nl/assets/images/viass/en>

STIJL	UITZICHT	AFSTAND NAAR :	ORIËNTATIE
<ul style="list-style-type: none"> • Modern • Contemporary 	<ul style="list-style-type: none"> • Panoramisch 	Strand : 4 Km Vliegveld: 40 Km Centrum : 100 m	South East West
MEUBELS	PARKING NEE CARS		KEUKEN
<ul style="list-style-type: none"> • Niet gemeubileerd 	: 1	<ul style="list-style-type: none"> • Tegels • Steen 	<ul style="list-style-type: none"> • Open keuken • Ingerichte keuken
TUIN TERRAS	VERWARMING	EXTRA	ENERGETIC CERTIFIED
<ul style="list-style-type: none"> • Overdekt terras • Open terras • Palmbomen • Aangelegd • Gras • Stenen muur • Privé tuin • Gemeenschappelijke tuin 	<ul style="list-style-type: none"> • Vloerverwarming badkamers 	<ul style="list-style-type: none"> • Inbouwkasten • Veiligheidsdeur • Dubbele beglazing • Wasruimte 	energy house Image type unknown https://www.iberiaproperty.nl/assets/images/

"OUR EXPERIENCE IS YOUR GUARANTEE"