



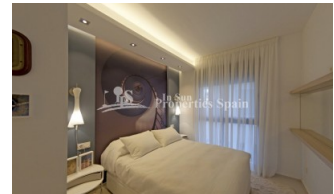
REF: # 5948

QUESADA-ROJALES (DONA PEPA)



INFO

PRIJS:	188.000 €
TYPE HUIS:	Appartement
PLAATS:	Quesada-Rojales (Dona Pepa)
SLAAPKAMERS:	3
Badkamers:	2
Build (m2):	102
Plot (m2):	-
Terras (m2):	35
Years:	
Floor:	-
bericht	-




BESCHRIJVING

Gran Sol is a new KEY READY residential located in Doña Pepa, an elegant urbanisation with wide avenues, wonderful views to the Natural Park and the salt lakes with a wide range of leisure activities and all the necessary amenities. Available are these 3 bedrooms, 2 bathroom Ground Floor, Corner Apartments of 102m2 with 35m2 private garden with tiled area and artificial grass, storage room, access to four swimming pools, beautiful Green areas, Gym and a private gated parking inside the residential. Each block also has a lift that leads directly to the solarium. Its high-tech architecture with pure lines combines perfectly with its predominant colour (white) giving a sensation of harmony. Doña Pepa is a modern urbanisation belonging to Ciudad Quesada and has all the amenities which include supermarkets, bars, hotel and shops as well as a bank. Ciudad Quesada town centre is a ten minute walk from Doña Pepa. In Ciudad Quesada itself you will find international supermarkets, restaurants, banks, a medical centre as well as a water park. The property is ideally located if you are a golf enthusiast, with La Marquesqa Golf Club just a five minute drive away. The nearest beaches are at

Guardamar/Campomar and La Mata ten minutes drive away. Nearest
Airports: San Javier (Murcia) - Approx 30 minute drive Alicante Airport -
Approx 30 minute drive



STIJL <ul style="list-style-type: none"> • Modern • Contemporary 	UITZICHT <ul style="list-style-type: none"> • Panoramisch 	AFSTAND NAAR : <div>Strand : 7 Km</div> <div>Vliegveld: 30 Km</div> <div>Centrum : 1 Km</div> <ul style="list-style-type: none"> • Tegels • Steen 	ORIËNTATIE <div>South East West</div>
PARKING NEE CARS <div>: 1</div>	ALGEMENE WOONRUIMTE <ul style="list-style-type: none"> • Opslagruimte • Gym 	KEUKEN <ul style="list-style-type: none"> • Open keuken • Ingerichte keuken 	
TUIN TERRAS <ul style="list-style-type: none"> • Overdekt terras • Open terras • Aangelegd • Stenen muur • BBQ/grill • Privé tuin • Gemeenschappelijke tuin 	EXTRA <ul style="list-style-type: none"> • Inbouwkasten • Veiligheidsdeur • Dubbele beglazing • Lift 	ENERGETIC CERTIFIED 	

"OUR EXPERIENCE IS YOUR GUARANTEE"