



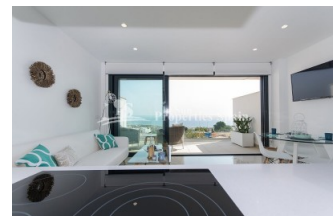
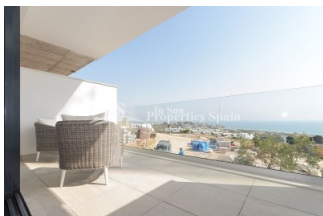
REF: # 5769

ALICANTE



#### INFO

<b>PRIJS:</b>	234.000 €
<b>TYPE HUIS:</b>	Appartement
<b>PLAATS:</b>	Alicante
<b>SLAAPKAMERS:</b>	2
<b>Badkamers:</b>	2
<b>Build ( m2 ):</b>	-
<b>Plot ( m2 ):</b>	156
<b>Terras ( m2 ):</b>	10
<b>Years:</b>	
<b>Floor:</b>	-
<b>bericht</b>	-




#### BESCHRIJVING

Delivery from Oct 2019. Superb new development of APARTMENTS/DUPLEX in GRAN ALACANT. A privileged location with STUNNING VIEWS of the Mediterranean Sea, in an environment of protected natural areas and with good services and communication. There are two types of Apartments for sale. TYPE A (3 Bedroom) comprises of ground floor parking space, hallway, bedroom, bathroom, open plan lounge, dining area and kitchen plus terrace. To the first floor there are a further 2 bedrooms, 2 bathrooms, laundry room and further terrace. prices from €306,000. TYPE B (2 bedrooms) comprises of ground floor parking space, basement, laundry room and patio. To the first floor 2 bedrooms, 2 bathrooms, open plan kitchen, lounge and dining area plus terrace. Prices from €234,000. All come with underfloor heating in bathrooms, pre-installation of air conditioning ducts and motorised blinds in bedrooms... Access to communal pool and gardens. Excellent connections to Alicante city and Airport. Walking distance to the beaches and just a few kilometers from Alicante, Elche and Santa Pola. Close to the marina, train stations and approx. 5 minutes from the international airport. Nearby there is a wide range of services with access to hospitals,

shopping centres, entertainment and golf courses.



STIJL	UITZICHT	AFSTAND NAAR :	ORIËNTATIE
<ul style="list-style-type: none"> <li>Modern</li> <li>Contemporary</li> </ul>	<ul style="list-style-type: none"> <li>Panoramisch</li> <li>Zeezicht</li> </ul>	Strand : 500 m Vliegveld: 10 Km Centrum : 500 m	South
MEUBELS	PARKING NEE CARS	<ul style="list-style-type: none"> <li>Tegels</li> <li>Steen</li> </ul>	KEUKEN
<ul style="list-style-type: none"> <li>Niet gemeubileerd</li> </ul>	: 1		<ul style="list-style-type: none"> <li>Open keuken</li> <li>Ingerichte keuken</li> <li>Graniet bovenblad</li> </ul>
TUIN TERRAS	EXTRA	ENERGETIC CERTIFIED	
<ul style="list-style-type: none"> <li>Overdekt terras</li> <li>Open terras</li> <li>Gemeenschappelijke tuin</li> </ul>	<ul style="list-style-type: none"> <li>Inbouwkasten</li> <li>Veiligheidsdeur</li> <li>Dubbele beglazing</li> <li>Wasruimte</li> </ul>		

**"OUR EXPERIENCE IS YOUR GUARANTEE"**